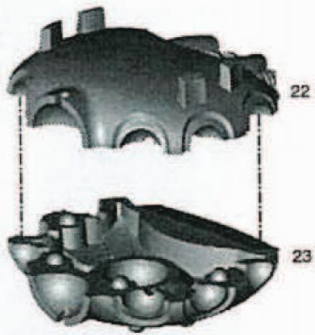


**1** BODY ASSEMBLY • ASSEMBLAGE DU CORPS • MONTAJE DEL CUERPO  
ZUSAMMENBAU DES KÖRPERS • ASSEMBLAGGIO DEL CORPO • 体の組み立て

**A**



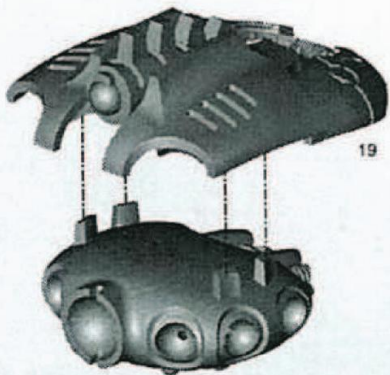
**B**



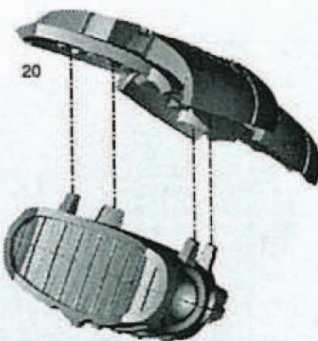
**C**



**D**



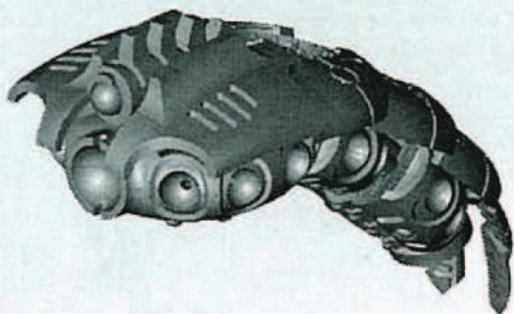
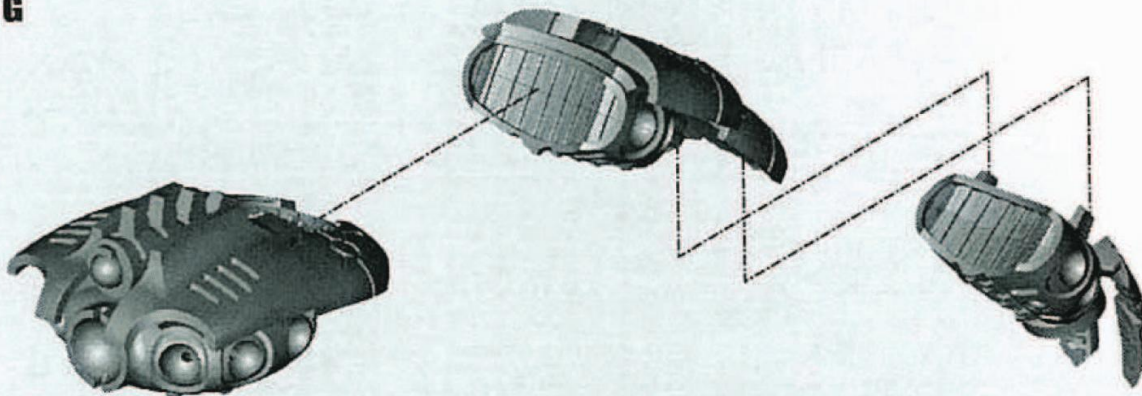
**E**



**F**



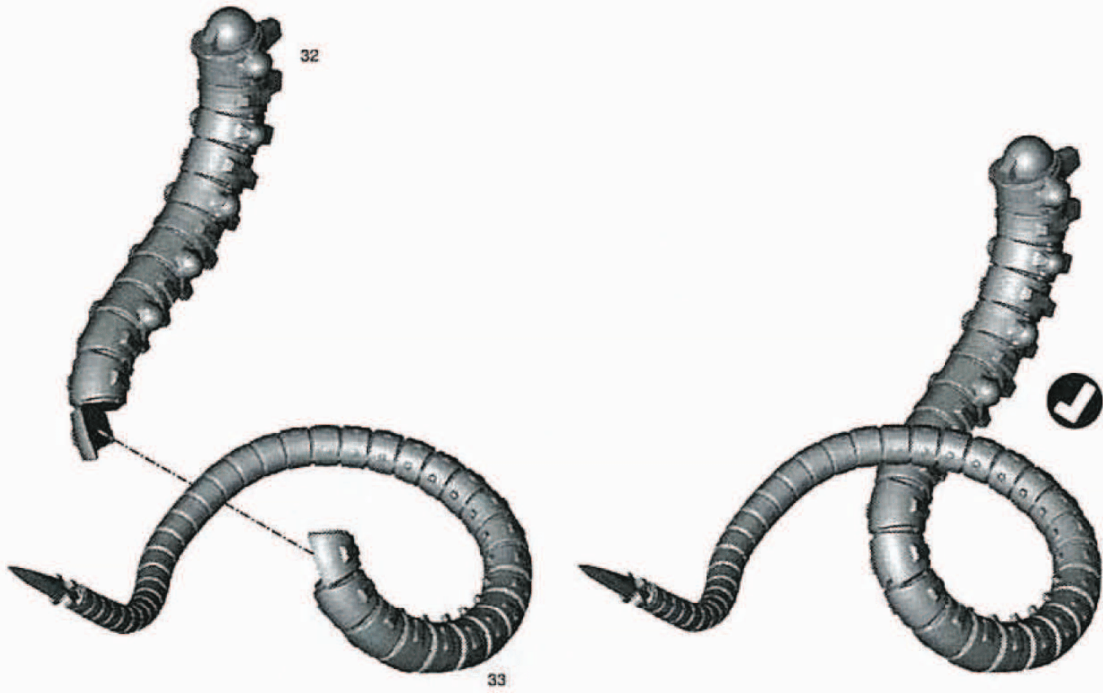
**G**



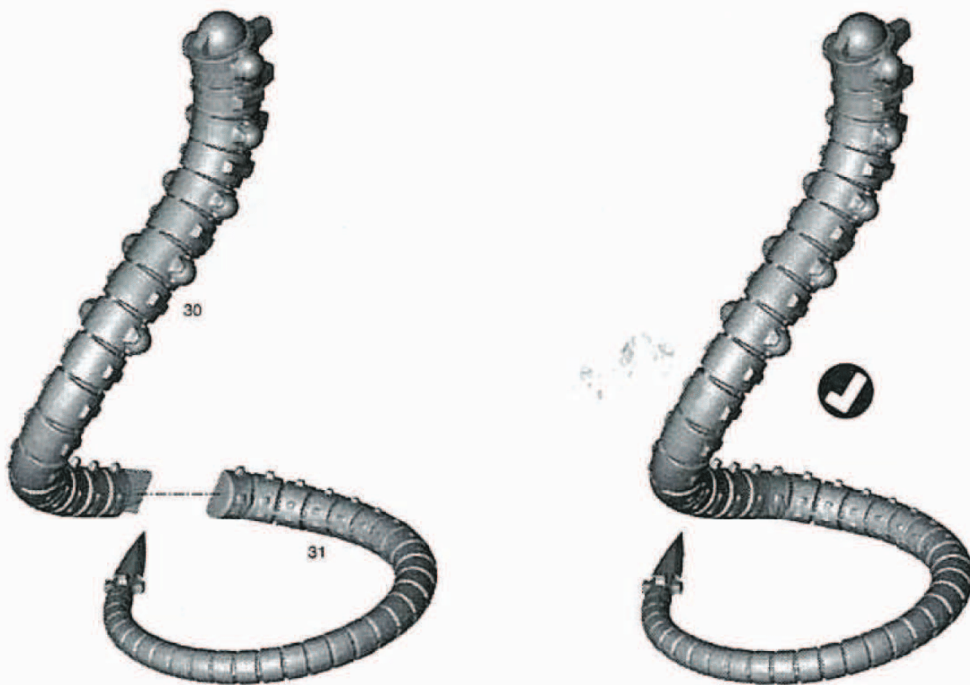
**2**

**TAIL ASSEMBLY • ASSEMBLAGE DE LA QUEUE • MONTAJE DE LA COLA  
ZUSAMMENBAU DES SCHWANZES • ASSEMBLAGGIO DELLA CODA • 尾の組み立て**

**A**

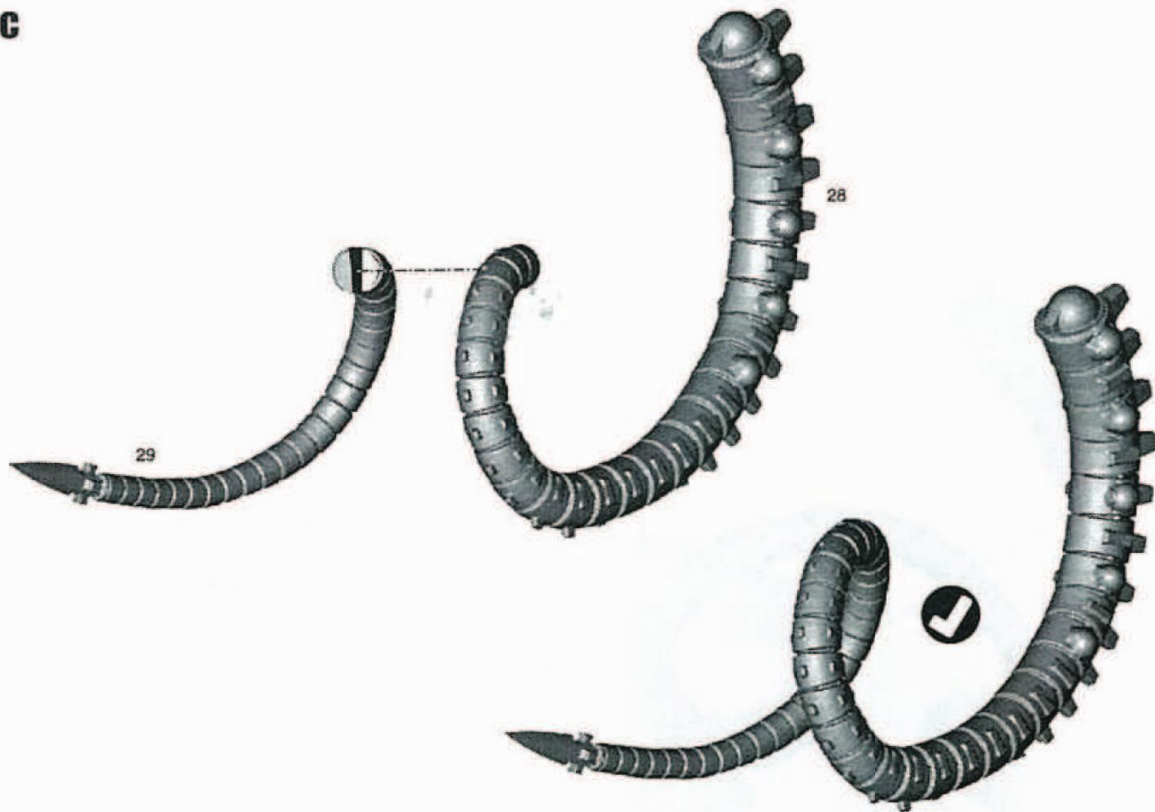


**B**

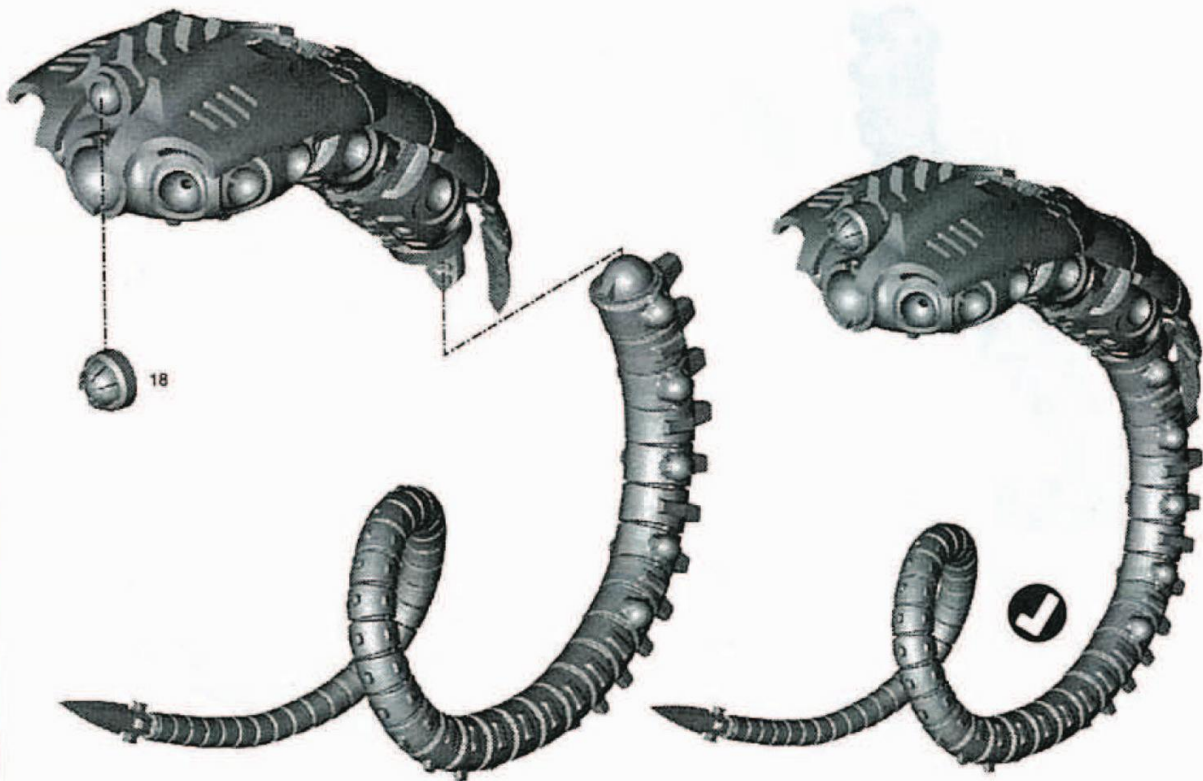


TAIL ASSEMBLY contd. • ASSEMBLAGE DE LA QUEUE suite • CONT. MONTAJE DE LA COLA  
ZUSAMMENBAU DES SCHWANZES, Forts. • ASSEMBLAGGIO DELLA CODA (segue) • 尾の組み立て(続き)

C

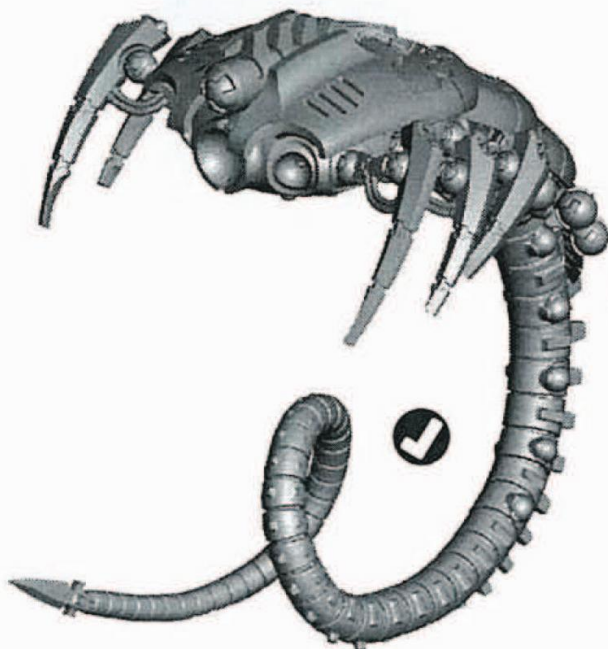
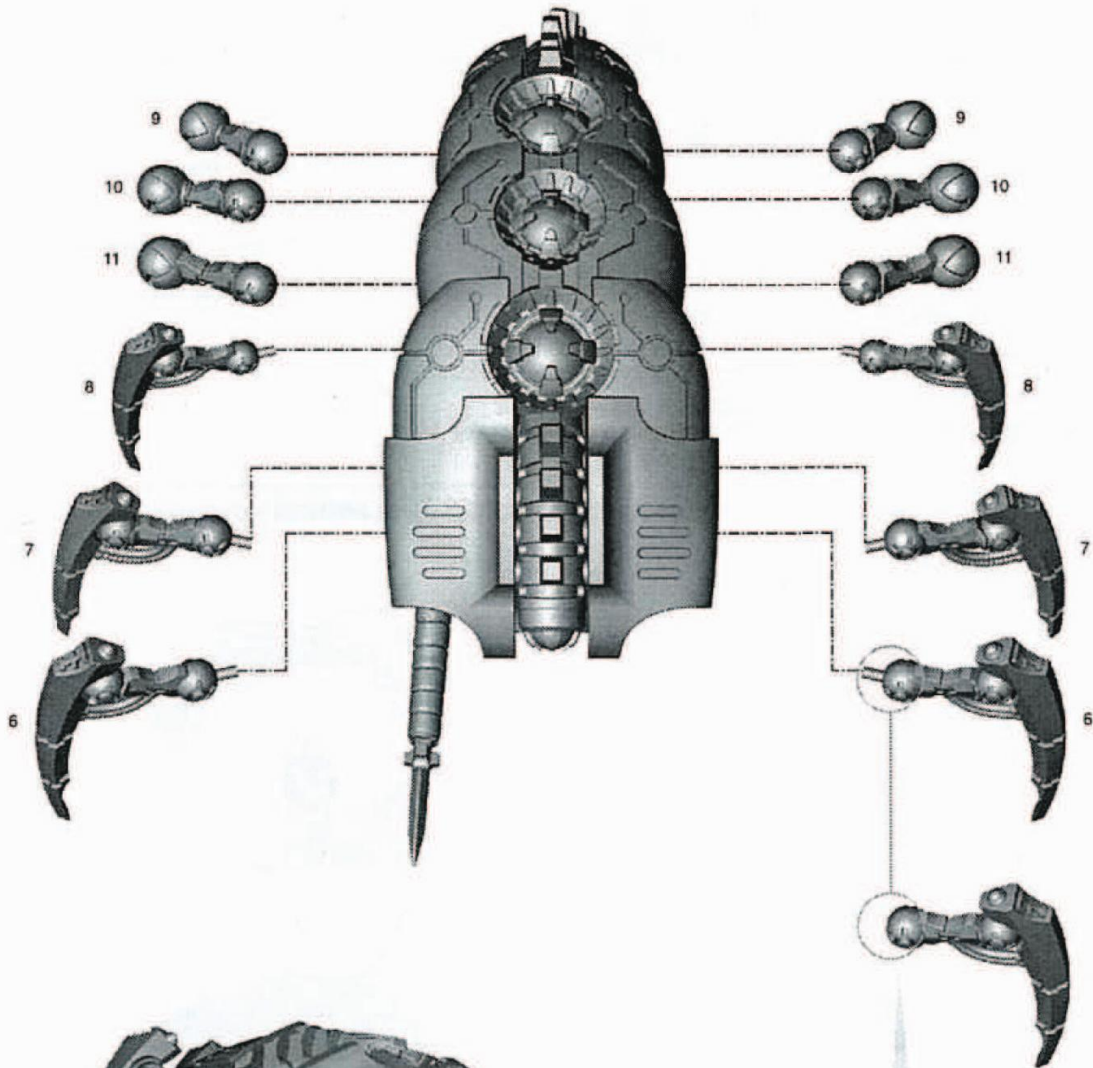


3 ASSEMBLE ALL BODIES TO TAILS • ASSEMBLAGE DES CORPS AUX QUEUES • MONTA TODOS LOS CUERPOS SOBRE LAS COLAS  
BAU ALLE KÖRPER UND SCHWÄNZE ZUSAMMEN • ASSEMBLA TUTTI I CORPI ALLE CODE • 体と尾を全て組み立てる



**4**

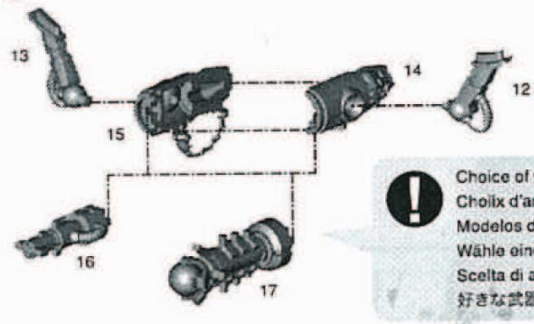
**LEG AND DIMENSIONAL DESTABILISER ASSEMBLY • MATRICE DE DÉSTABILISATION DIMENSIONNELLE**  
**MONTAJE DE LA PATA Y DESESTABILIZADOR DIMENSIONAL • ZUSAMMENBAU DER BEINE UND DIMENSIONSDESTABILISATOREN**  
**ASSEMBLAGGIO DI ZAMPE E DESTABILIZZATORE DIMENSIONALE • 脚と次元不安定化装置の組み立て**



Pegs can be removed for posing options  
 Les ergots peuvent être retirés pour un positionnement libre  
 Los apoyos pueden retirarse para probar otras opciones de posición  
 Die Stifte können zur freien Positionierung entfernt werden  
 I perni possono essere rimossi per ottenere diverse posizioni  
 突起を取り除けば、ポージング調整可能

5

**WEAPON ASSEMBLY • ASSEMBLAGE DES ARMES • MONTAJE DEL ARMA  
ZUSAMMENBAU DER WAFFEN • ASSEMBLAGGIO DELL'ARMA • 武器の組み立て**



**!** Choice of weapons  
Choix d'armes  
Modelos de armas  
Wähle eine Waffe  
Scelta di armi  
好きな武器を選択

Transdimensional beamer  
Faisceau transdimensionnel  
Lanzarrayos transdimensional  
Transdimensionstrahler  
Raggio intradimensionale  
トランスディメンショナル・ビーマー



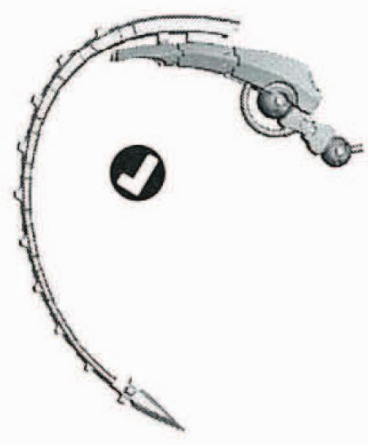
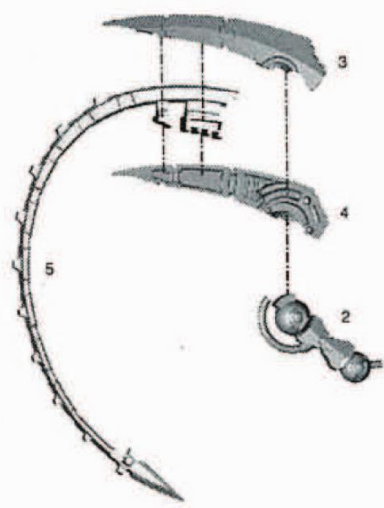
Particle caster  
Projecteur de particules  
Lanzaparticulas  
Partikelwerfer  
Pistola fotonica  
パーティクル・キャスター



**CHOOSE THE VARIANT YOU WANT TO ASSEMBLE: WHIP COILS OR FRONT LEGS  
CHOISISSEZ LA VARIANTE À ASSEMBLER : CÂBLES CONSTRUCTEURS OU PATTES AVANT  
ELIGE LA VARIANTE QUE QUIERAS MONTAR: LÍTIGOS ESPIRALES O PATAS FRONTALES  
WÄHLE DIE VARIANTE, DIE DU BAUEN MÖCHTEST: FESSELSPULEN ODER VORDERBEINE  
SCEGLI LA VARIANTE CHE DESIDERI ASSEMBLARE: SPIRE AVVOLGENTI O ZAMPE ANTERIORI  
組み立てたいバリエーションを選択:ウィップ・コイル、もしくは前脚**

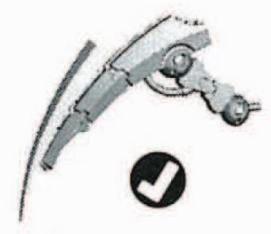
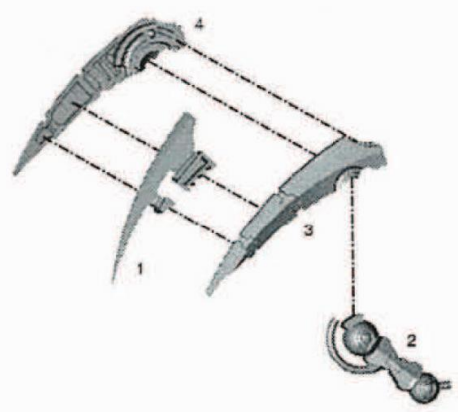
6

**WHIP COILS • CÂBLES CONSTRUCTEURS • LÁTIGOS ESPIRALES • FESSELSPULEN • SPIRE AVVOLGENTI • ウィップ・コイル**



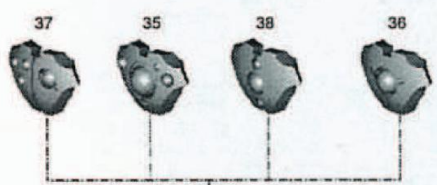
7

**FRONT LEGS • PATTES AVANT • PATAS FRONTALES • VORDERBEINE • ZAMPE ANTERIORI • 前脚**



8

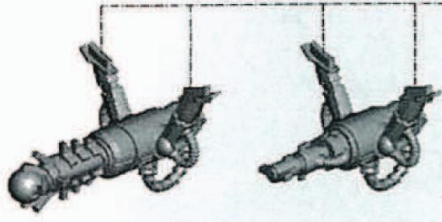
**HEAD AND WEAPON ASSEMBLY • ASSEMBLAGE DE LA TÊTE ET DES ARMES  
 MONTAJE DE LA CABEZA Y EL ARMA • ZUSAMMENBAU VON KOPF UND WAFFE  
 ASSEMBLAGGIO DI TESTA E ARMA • 頭と武器の組み立て**



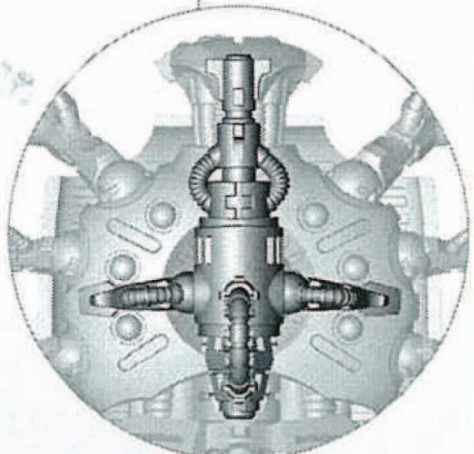
**!** Choice of head  
 Choix de têtes  
 Modelos de cabeza  
 Wähle einen Kopf  
 Scelta di teste  
 好きな頭を選択

Transdimensional beamer  
 Faisceau transdimensionnel  
 Lanzarrayos transdimensional  
 Transdimensionstrahler  
 Raggio intradimensionale  
 トランスディメンショナル・ビーマー

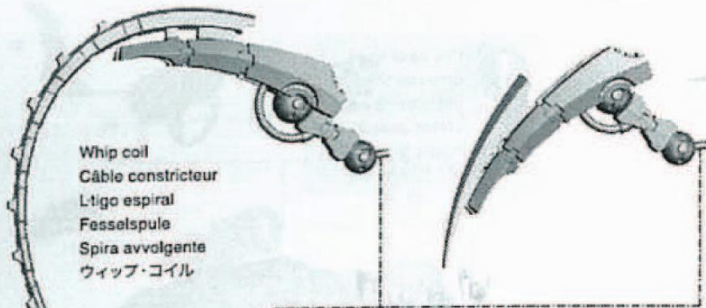
Particle caster  
 Projecteur de particules  
 Lanzaparticulas  
 Partikelwerfer  
 Pistola fotonica  
 パーティクル・キャスター



**!** Choice of weapon  
 Choix d'armes  
 Modelos de arma  
 Wähle eine Waffe  
 Scelta di armi  
 好きな武器を選択



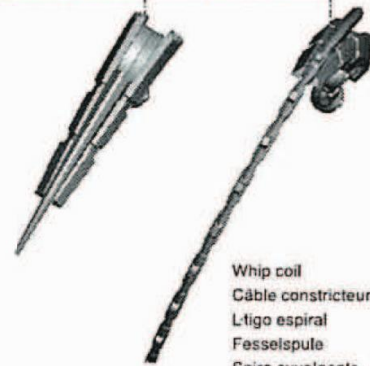
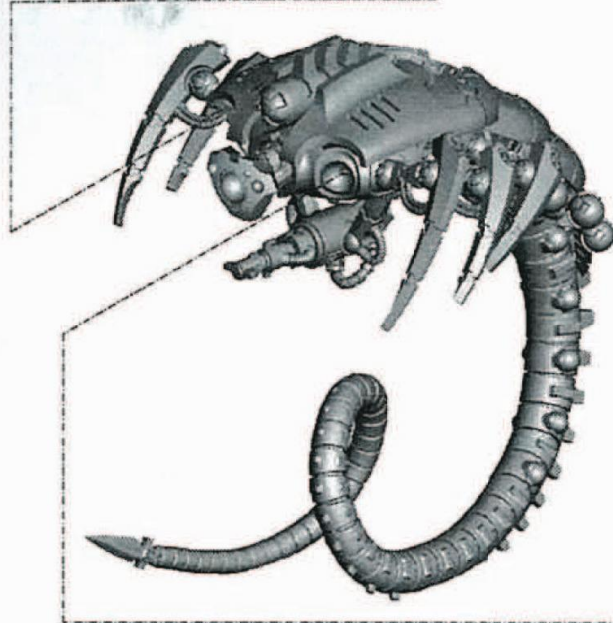
**9** FINAL ASSEMBLY • ASSEMBLAGE FINAL • MONTAJE FINAL  
 ABSCHLIESSENDE ZUSAMMENBAU • ASSEMBLAGGIO FINALE • 最終組み立て



Whip coil  
 Câble constricteur  
 L'tigo espiral  
 Fesselspule  
 Spira avvolgente  
 ウィップ・コイル



Choice of leg  
 Choix de pattes  
 Modelos de pata  
 Wähle ein Bein  
 Scelta di zampe  
 好きな脚を選択



Whip coil  
 Câble constricteur  
 L'tigo espiral  
 Fesselspule  
 Spira avvolgente  
 ウィップ・コイル



Choice of leg  
 Choix de pattes  
 Modelos de pata  
 Wähle ein Bein  
 Scelta di zampe  
 好きな脚を選択