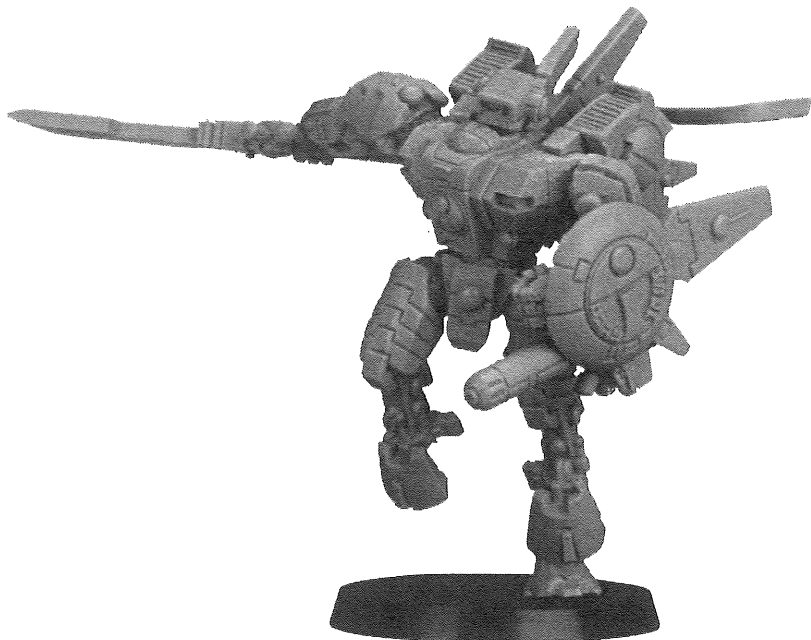


WARHAMMER 40,000 TAU EMPIRE



COMMANDER FARSIGHT

COMMANDEUR FARSIGHT
COMMANDE O' SHOVH
COMMANDER WEISICHT
COMMANDANTE LUNGOGUARDO
コマンドー・ファースサイト



EXPLANATION OF SYMBOLS

EXPLICATION DES SYMBOLES • EXPLICACIÓN DE SÍMBOLOS
ERLÄUTERUNG DER SYMBOLE • LEGENDA DEI SIMBOLI • アイコンの説明



SPECIAL INSTRUCTION - PLEASE READ
INSTRUCTIONS SPECIALES - LIRE ATTENTIVEMENT
INSTRUCCIÓN ESPECIAL - POR FAVOR, LEA
BESONDERE ANWEISUNG - BITTE LESEN
ISTRUZIONI SPECIALI - LEGGI ATTENTAMENTE
特記事項 - 必ず読んでください



FINISHED ASSEMBLY
ASSEMBLAGE TERMINE
MONTAJE FINALIZADO
FERTIGER ZUSAMMENBAU
ASSEMBLAGGIO COMPLETO
完成済



ALTERNATE ANGLE
VUE ALTERNATIVE
ÁNGULO INVERSO
ALTERNATIVE ANSICHT
VISUALE ALTERNATIVA
別の角度から見た図



DO NOT GLUE THE COMPONENTS
NE PAS COLLER LES ÉLÉMENTS
NO PEGAR LOS COMPONENTES
BITTE DIE TEILE NICHT KLEBEN
NON INCOLLARE I COMPONENTI
パーツを接着しないこと

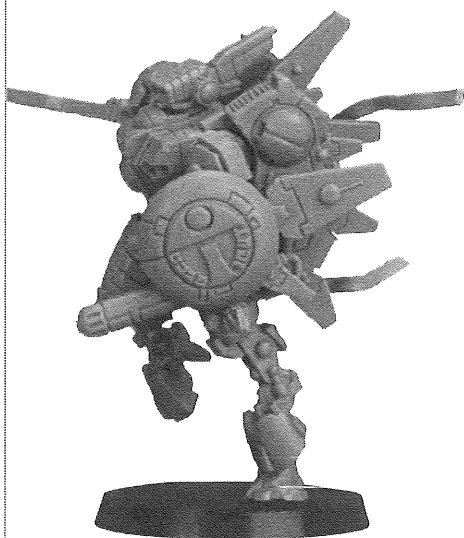
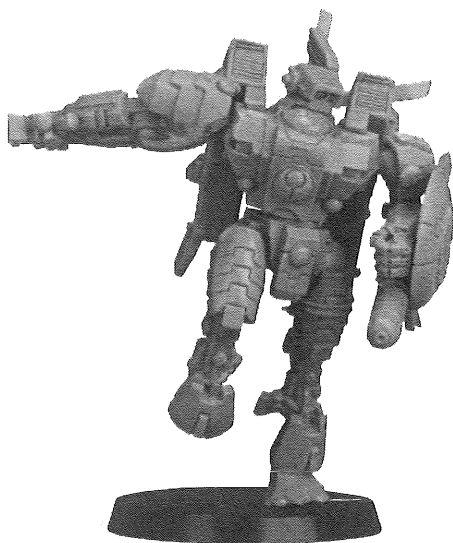
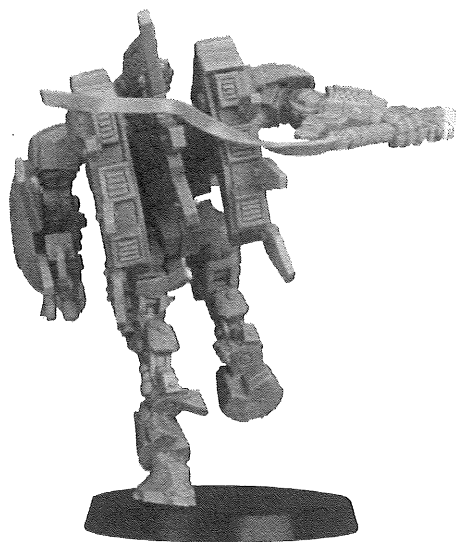
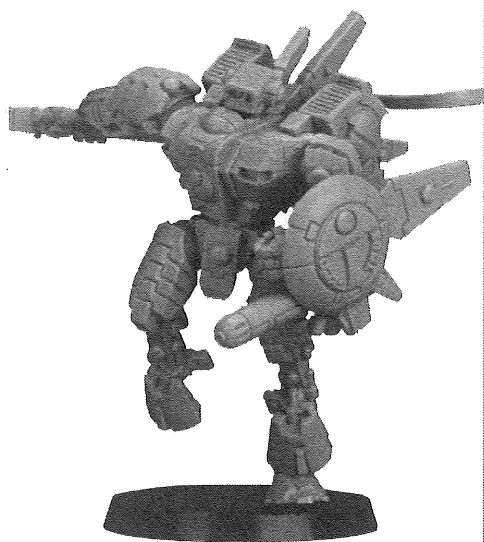


CHOICE OF PARTS
CHOIX D'ÉLÉMENTS
MODELOS DE COMPONENTES
AUSWAHL AN TEILEN
SCELTA DI COMPONENTI
パーツの選択



CLOSE-UP VIEW
VUE RAPPROCHÉE
PRIMER PLATO
NAHANSICHT
INGRANDIMENTO
拡大図

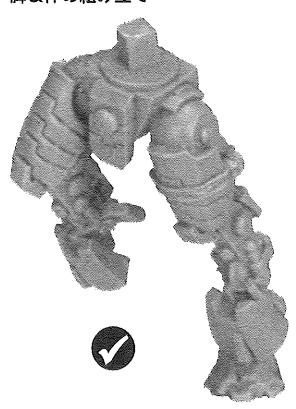
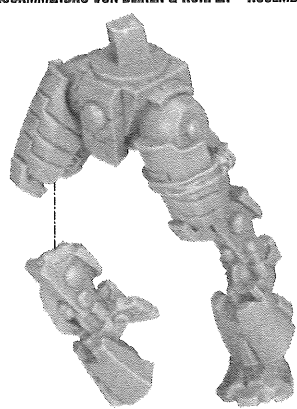




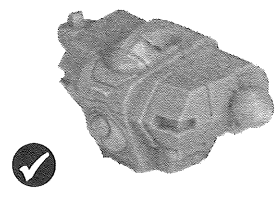
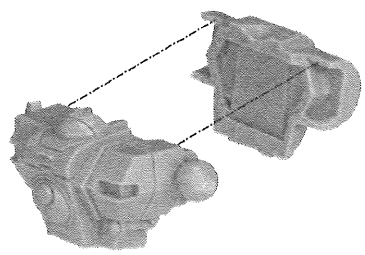
1

LEGS & BODY ASSEMBLY • ASSEMBLAGE DU TORSER ET DES JAMBES • MONTAJE DE LAS PIERNAS Y EL CUERPO
ZUSAMMENBAU VON BEINEN & KÖRPER • ASSEMBLAGGIO DI GAMBE E CORPO • 脚&体の組み立て

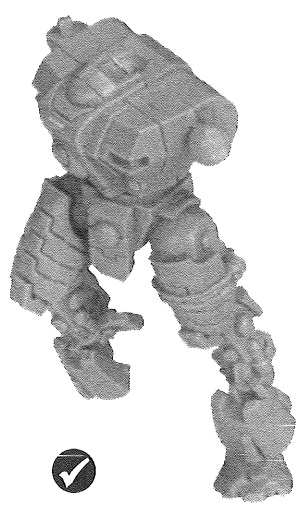
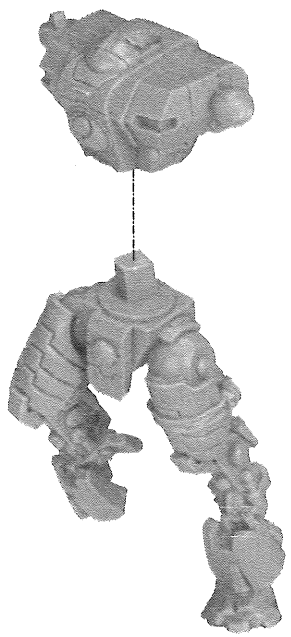
A



B

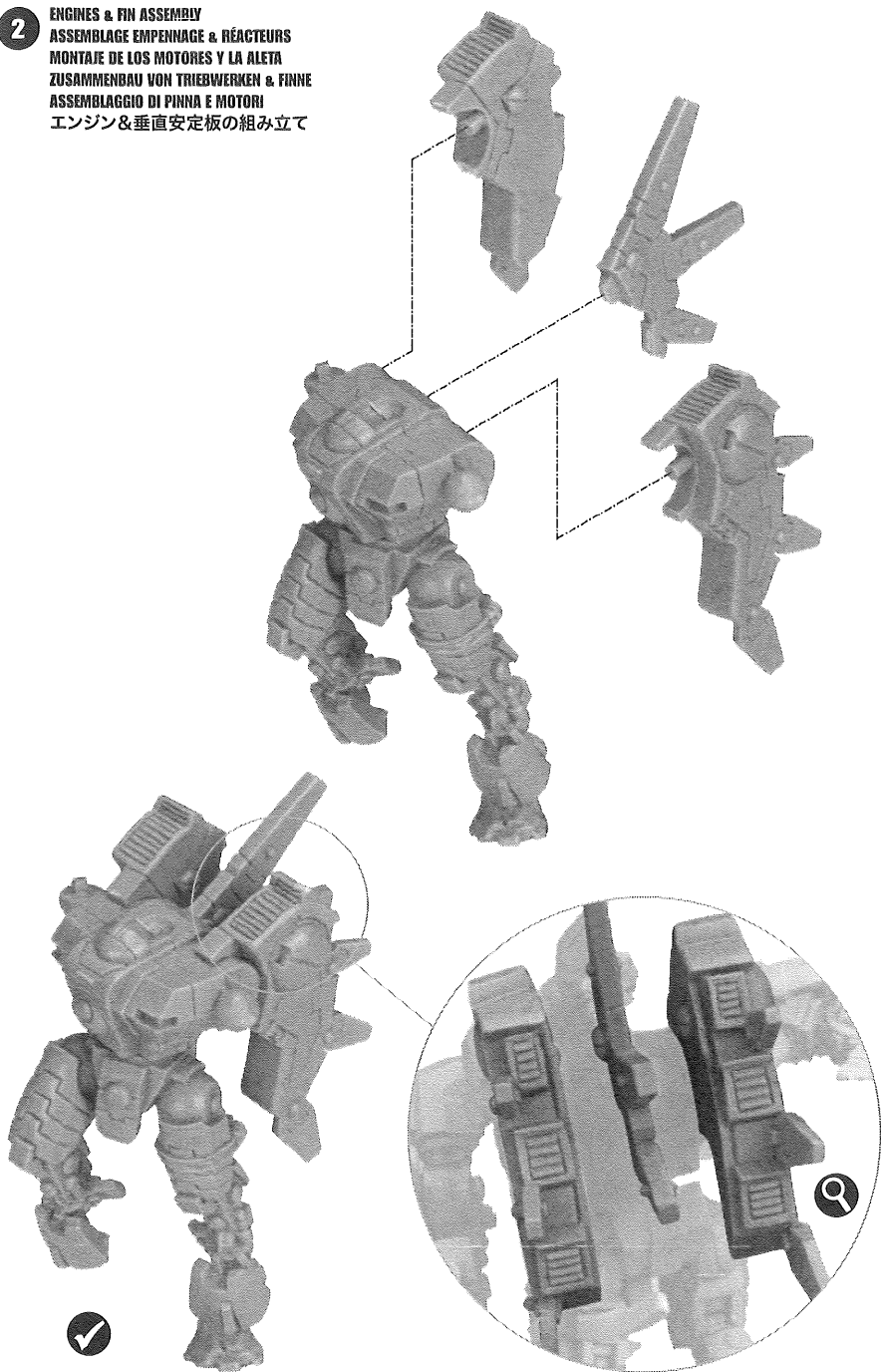


C



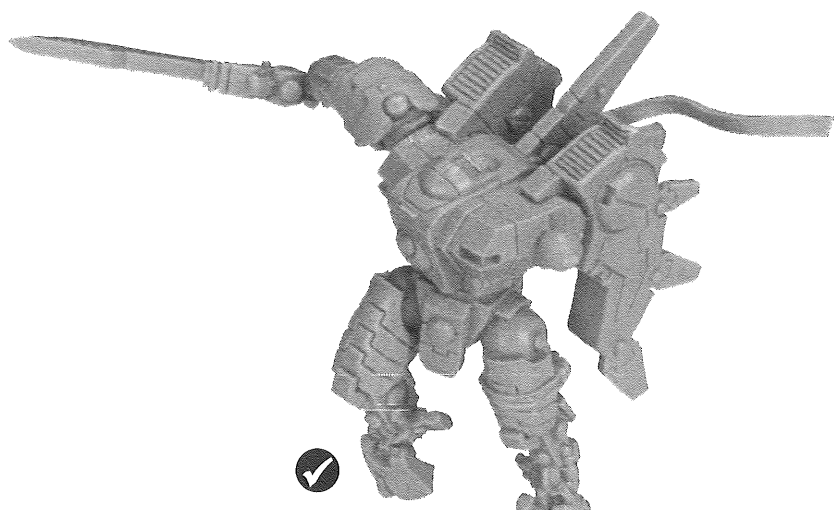
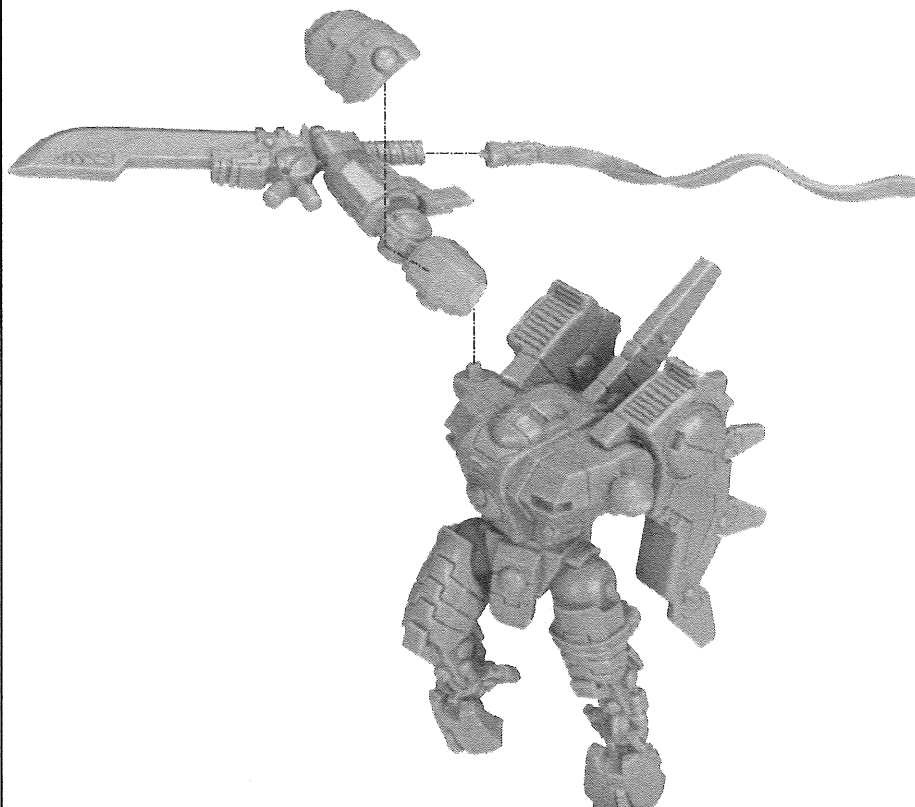
2

ENGINES & FIN ASSEMBLY
ASSEMBLAGE EMPENNAGE & RÉACTEURS
MONTAJE DE LOS MOTORES Y LA ALETA
ZUSAMMENBAU VON TRIEBWERKEN & FINNE
ASSEMBLAGGIO DI PINNA E MOTORI
エンジン&垂直安定板の組み立て



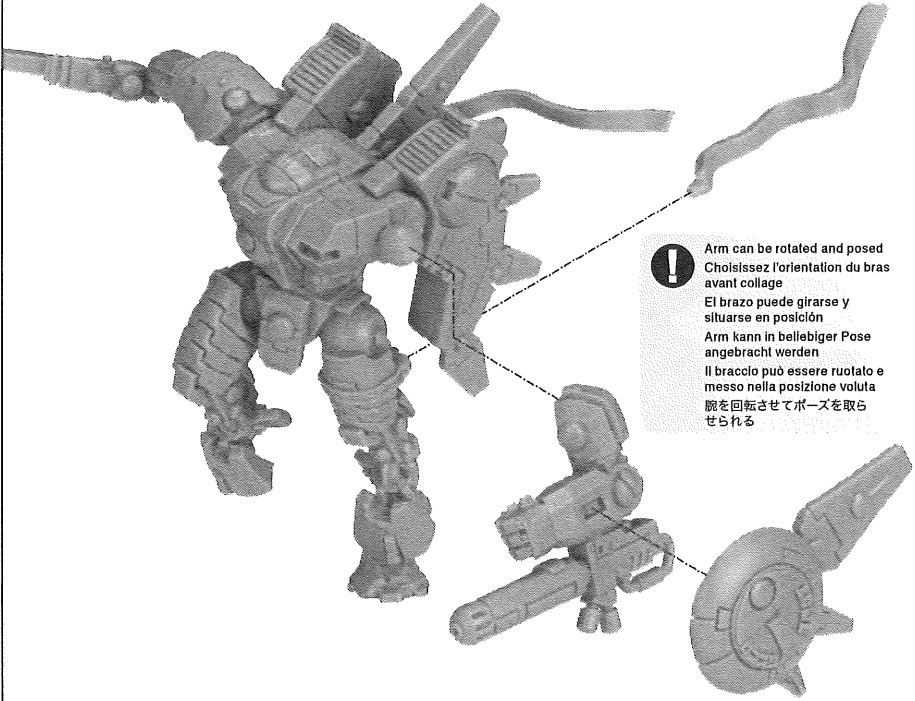
3

RIGHT ARM ASSEMBLY • ASSEMBLAGE DU BRAS DROIT • MONTAJE DEL BRAZO DERECHO
ZUSAMMENBAU DES RECHTEN ARMS • ASSEMBLAGGIO DEL BRACCIO DESTRO • 右腕の組み立て

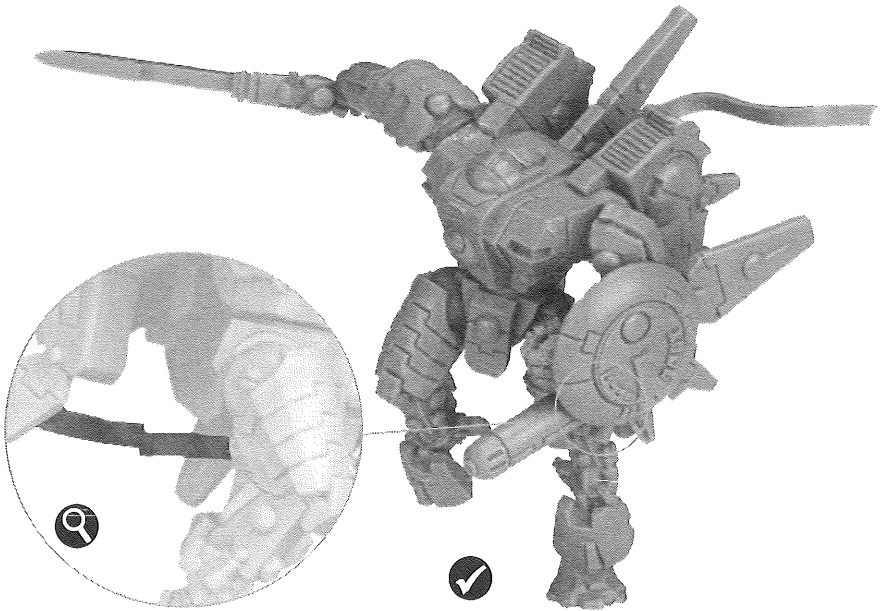


4

LEFT ARM & LEG STREAMER • BRAS GAUCHE & BANDEROLE • BRAZO IZQUIERDO Y BANDERÍN DE LA PIERNA
LINKER ARM & BEINBAND • BRACCIO SINISTRO E FASCIA • 左腕&脚の吹き流し



! Arm can be rotated and posed
Choisissez l'orientation du bras
avant collage
El brazo puede girarse y
situarse en posición
Arm kann in beliebiger Pose
angebracht werden
Il braccio può essere ruotato e
messo nella posizione voluta
腕を回転させてポーズを取ら
せられる



5

FINAL ASSEMBLY • ASSEMBLAGE FINAL • MONTAIE FINAL • ABSCHLIESSENDE ZUSAMMENBAU • ASSEMBLAGGIO FINALE • 最終組み立て



Head can be rotated
and posed
Choisissez l'orientation
de la tête avant collage
La cabeza puede
girarse y situarse en
posición
Kopf kann in beliebiger
Pose angebracht
werden
La testa può essere
ruotata e messa nella
posizione voluta
頭を回転させてポーズを
取らせられる

