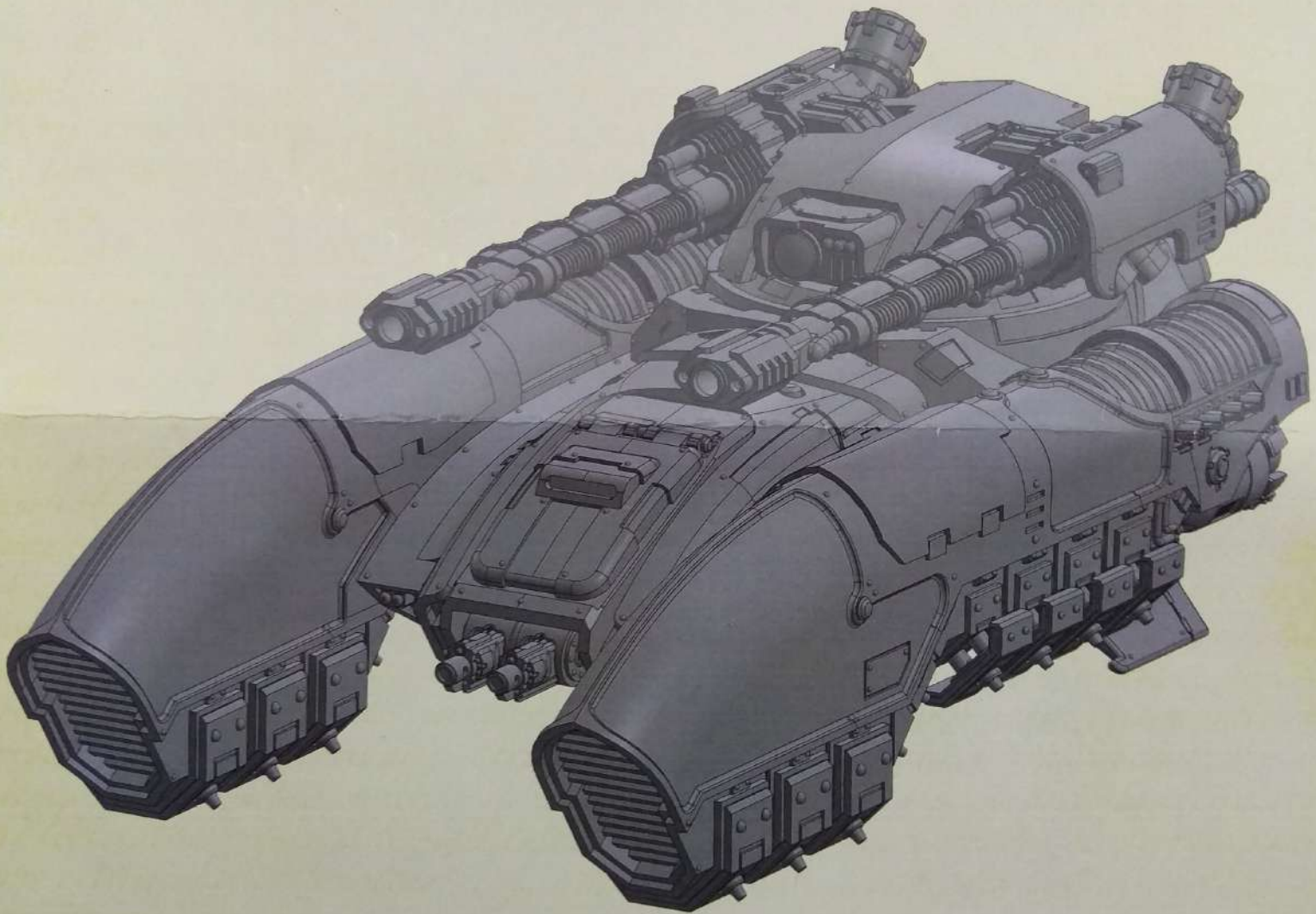


LEGIO CUSTODES CALADIUS GRAV-TANK

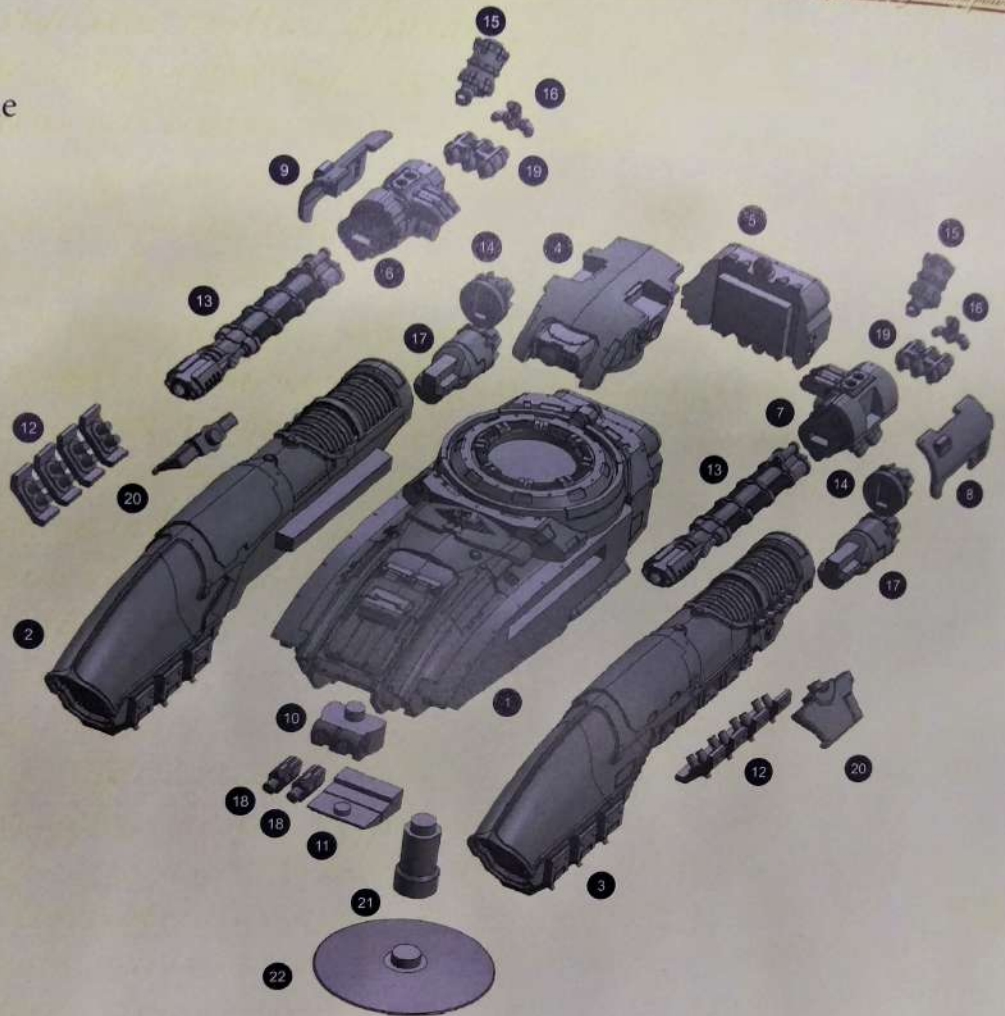
The Caladius pattern grav-tank was often deployed in situations requiring the heaviest of weapons the Legio Custodes could bring to bear. Well-protected and highly manoeuvrable, it was perhaps the most powerful battleline armoured unit of its size in the Imperium's forces, utilising technologies and systems derived not only from the Dark Age of Technology, but from developments made as a result of the Great Crusade's two centuries of warfare.



Components

Before assembly, check that none of the components are missing.

1. Hull
2. Right Nacelle
3. Left Nacelle
4. Turret
5. Generator
6. Right Iliastus Cannon Breech
7. Left Iliastus Cannon Breech
8. Left Cannon Casing
9. Right Cannon Casing
10. Chin Turret
11. Chin Turret Cover
12. Grav-plate x8
13. Iliastus Accelerator Cannon Barrel x2
14. Thruster x2
15. Cannon Coolant Canister x2
16. Cannon Cabling
17. Engine x2
18. Lastrum Bolt Cannon x2
19. Iliastus Cannon Fuel Canisters x2
20. Wing x2
21. Flying Stand Support
22. Flying Stand Base



Assembly Legend

Parts for Assembly



Glue Contact Area



Note



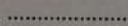
Reverse Angle



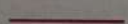
Do Not Glue



Insert



Component Highlight



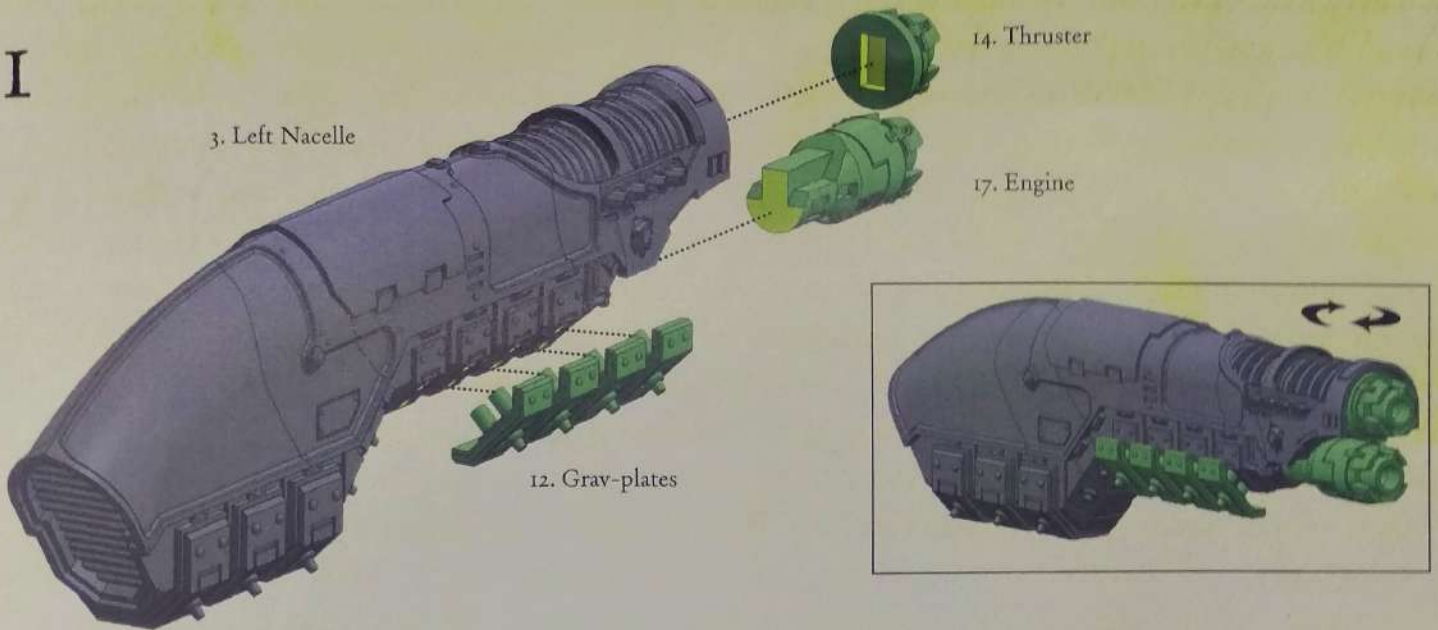
Preparing the Model for Assembly

Before assembling the model, wash each part thoroughly with an abrasive brush, such as a toothbrush, to remove any model release agent that may still be on the surface of the parts. Then, remove any excess resin such as mould lines, casting gates, vents and shims. For a more detailed guide to working with resin models, go to the Downloads section of the Forge World website.

This kit contains all the pieces required to construct a Caladius Grav-tank. To glue the resin pieces together, use Citadel Super Glue.

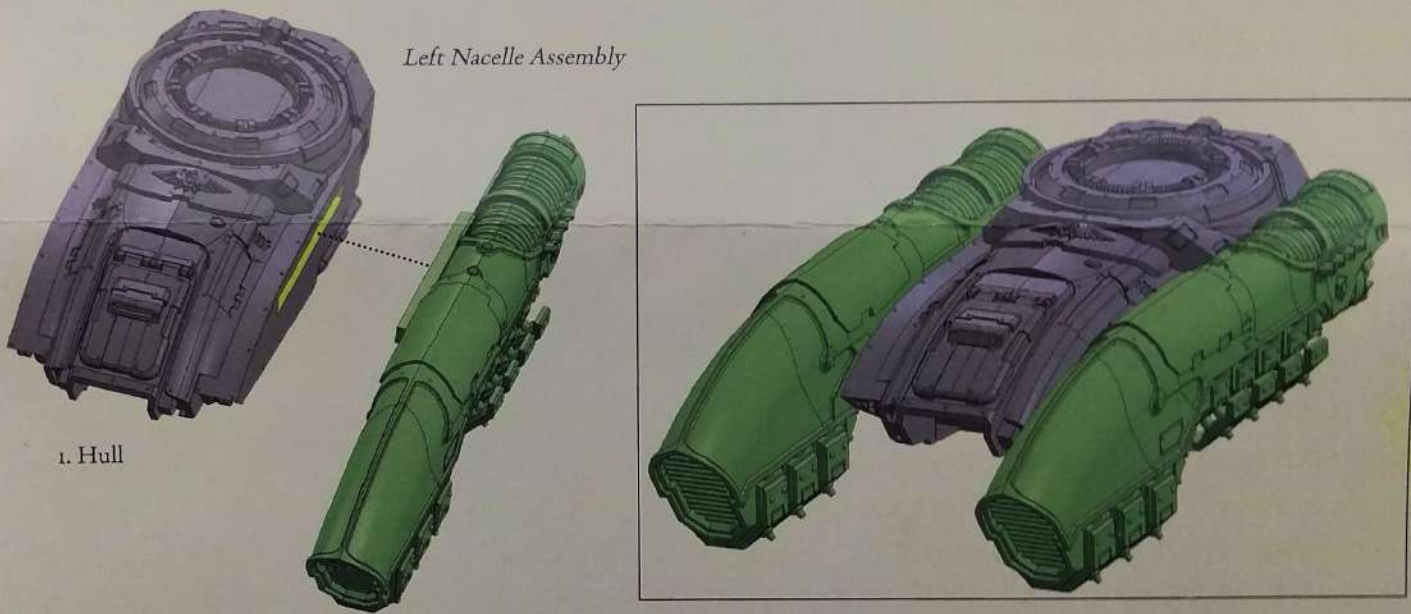
NOTE: We have cast this kit using advanced techniques and the best quality resin, but due to the nature of the casting process, your model may contain small air bubbles. These can easily be filled with model filler or super glue. Any slight warpage of thin parts can easily be corrected by immersing the part in hot tap water for about 1 minute, then carefully bending it back into shape.

I



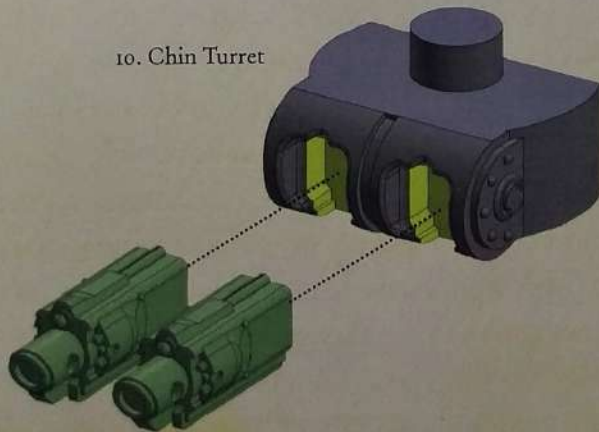
! Repeat stage 1 for part 2. Right Nacelle, 12. Grav-plates, 14. Thruster and 17. Engine.

2



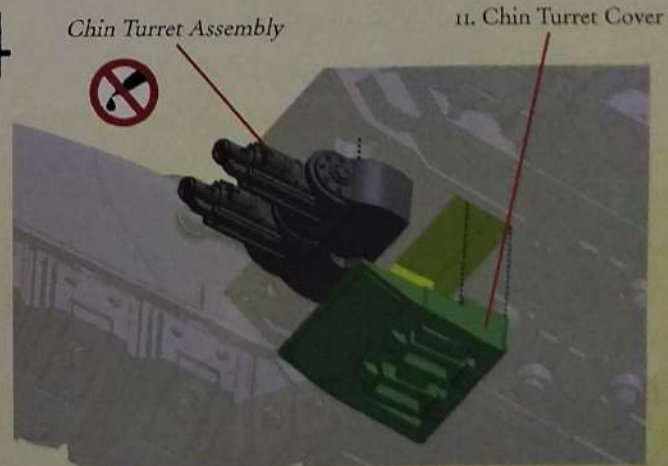
! Add both the Left and Right Nacelle Assemblies

3



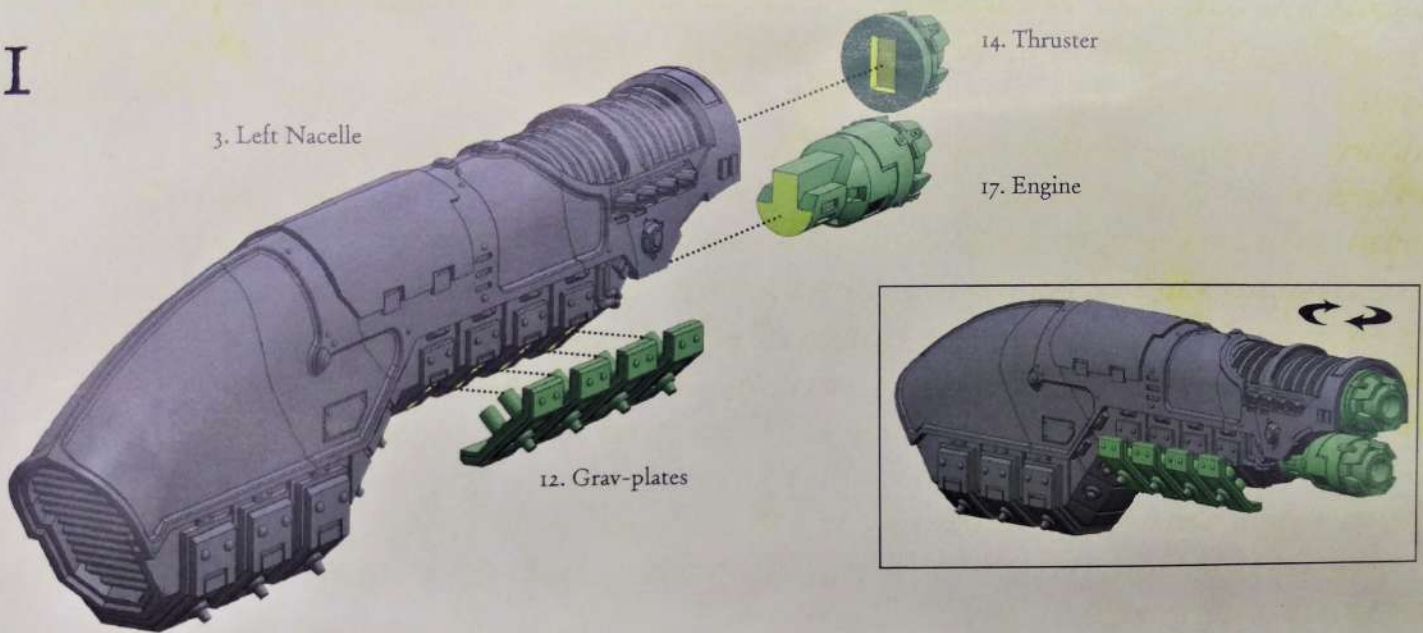
18. Lastrum Bolt Cannon

4



! Sandwich the Chin Turret Assembly between 11. Chin Turret Cover and the Hull Assembly.

I



Repeat stage 1 for part 2. Right Nacelle, 12. Grav-plates, 14. Thruster and 17. Engine.



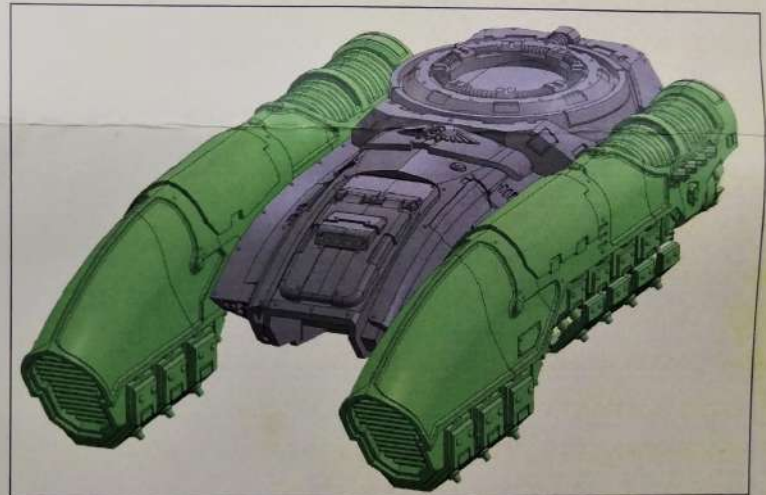
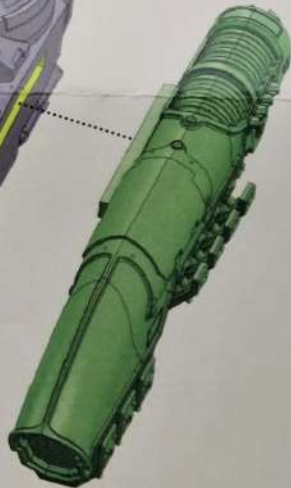
Repeat stage 1 for part 2. Right Nacelle, 12. Grav-plates, 14. Thruster and 17. Engine.

2



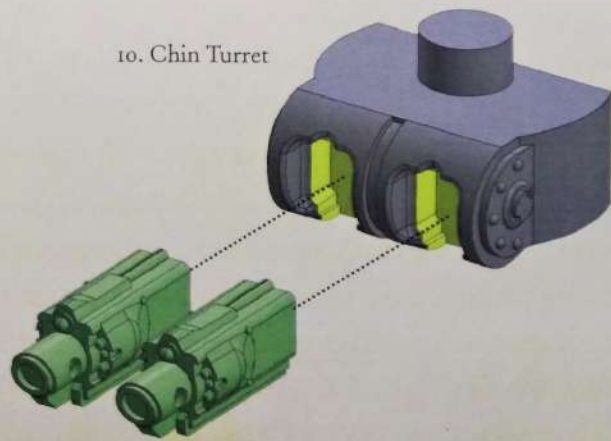
1. Hull

Left Nacelle Assembly

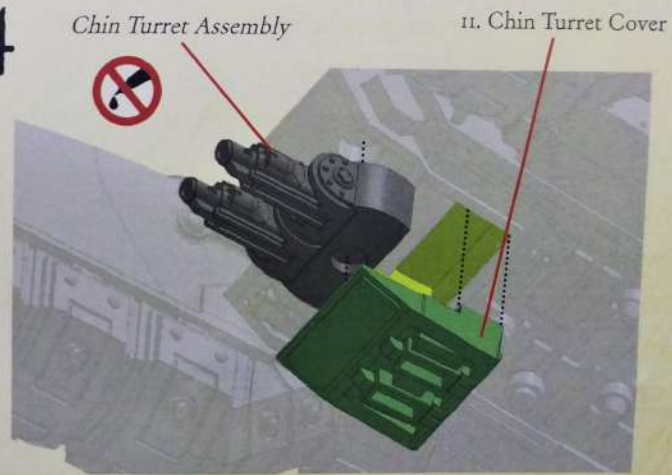


Add both the Left and Right Nacelle Assemblies

3

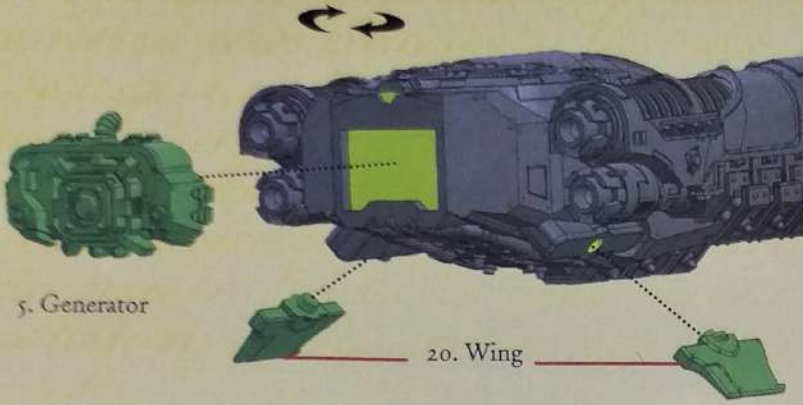


4



! Sandwich the Chin Turret Assembly between 11. Chin Turret Cover and the Hull Assembly.

5



5. Generator

20. Wing

6

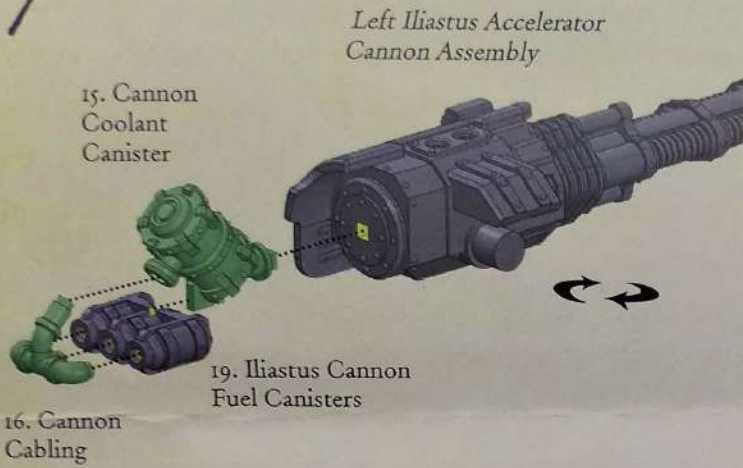


7. Left Iliastus Cannon Breech

8. Left Cannon Casing

13. Iliastus Accelerator Cannon Barrel

7



Left Iliastus Accelerator Cannon Assembly

15. Cannon Coolant Canister

19. Iliastus Cannon Fuel Canisters

16. Cannon Cabling

8



4. Turret

Right Iliastus Accelerator Cannon Assembly

Left Iliastus Accelerator Cannon Assembly



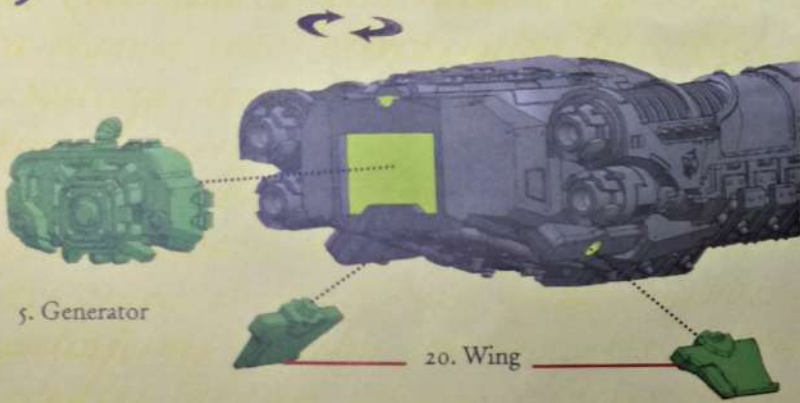
For the Right Iliastus Accelerator Cannon, repeat stages 6 and 7 using part 6. Right Iliastus Cannon Breech and 9. Right Cannon Casing.

9

Iliastus Accelerator Cannon Turret Assembly



5



6



7

Left Iliastus Accelerator Cannon Assembly



8



! For the Right Iliastus Accelerator Cannon, repeat stages 6 and 7 using part 6. Right Iliastus Cannon Breech and 9. Right Cannon Casing.

9

*Iliastus Accelerator Cannon
Turret Assembly*

