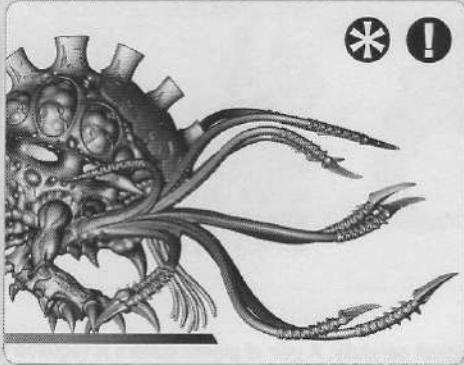


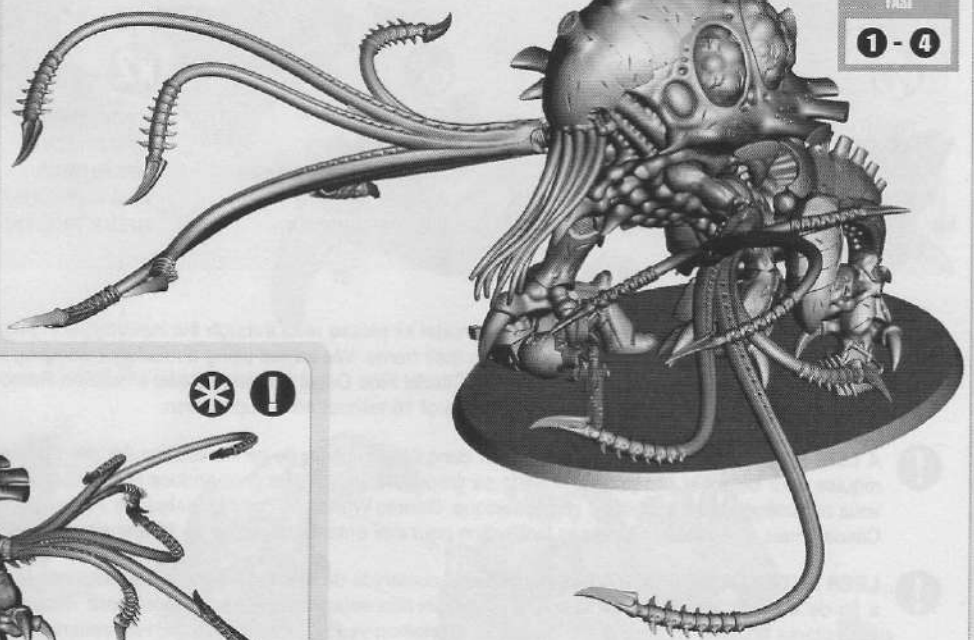
TYRANIDS

CHOOSE THE VARIANT YOU WANT TO BUILD • CHOISISSEZ LA VARIANTE À ASSEMBLER • ELIGE LAS MINIATURAS QUE VAYAS A MONTAR
WÄHLE DIE VARIANTE, DIE DU BAUEN MÖCHTEST • SCEGLI LA VARIANTE CHE VUOI ASSEMBLARE

! TOXICRENE (CROUCH POSITION)

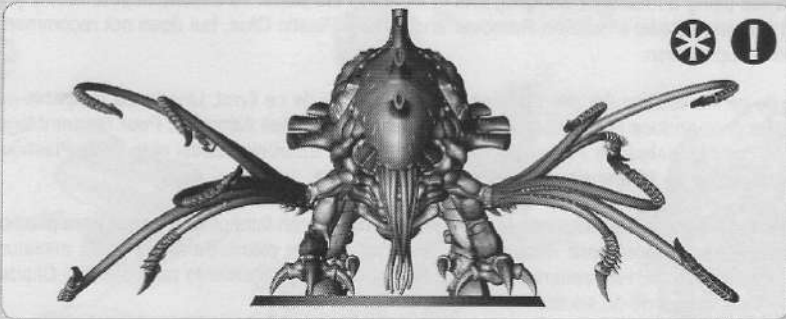


TOXICRENE (ATTACK POSITION)



STEPS
ÉTAPES
PASOS
SCHRITTE
FASI

1 - 4



- !** You can assemble the Toxicrene in the crouch position. To do this:
- Replace part 10 with part 45 in 1C.
 - Replace part 09 with part 44 in 1D.
 - Replace part 21 with part 16 in 3A.
 - Replace part 22 with part 17 in 3B.
 - Replace parts 27, 28 with parts 25, 26 in 4A. Don't use the fallen Terminator. Those stages in the assembly guide where a change needs to be made are marked with a *

Vous pouvez assembler le Toxicrene en position accroupie. Pour cela :

- Remplacez l'élément 10 par l'élément 45 en 1C.
- Remplacez l'élément 09 par l'élément 44 en 1D.
- Remplacez l'élément 21 par l'élément 16 en 3A.
- Remplacez l'élément 22 par l'élément 17 en 3B.
- Remplacez les éléments 27, 28 par les éléments 25, 26 en 4A. N'utilisez pas le Terminator.

Les étapes de ce guide d'assemblage nécessitant un changement sont identifiées par un *

Puedes montar al Toxicrene agazapado. Para ello, debes:

- Sustituir la pieza 10 por la 45 en 1C.
- Sustituir la pieza 09 por la 44 en 1D.
- Sustituir la pieza 21 por la 16 en 3A.
- Sustituir la pieza 22 por la 17 en 3B.
- Sustituir las piezas 27 y 28 por las 25 y 26 en 4A. No uses al Terminator caído. Los pasos en los que es necesario hacer estos cambios están señalados con *

Du kannst die Toxicrene in geduckter Haltung zusammenbauen. Ersetze dazu

- in Schritt 1C Teil 10 durch Teil 45.
- in Schritt 1D Teil 09 durch Teil 44.
- in Schritt 3A Teil 21 durch Teil 16.
- in Schritt 3B Teil 22 durch Teil 17.
- in Schritt 4A die Teile 27 & 28 durch die Teile 25 & 26. Der gefallene Terminator wird nicht verwendet.

Die Schritte der Bauanleitung, in denen eine Änderung erforderlich ist, sind gekennzeichnet durch das Symbol *

Puoi assemblare il Toxicrene in posizione accovacciata. In tal caso:

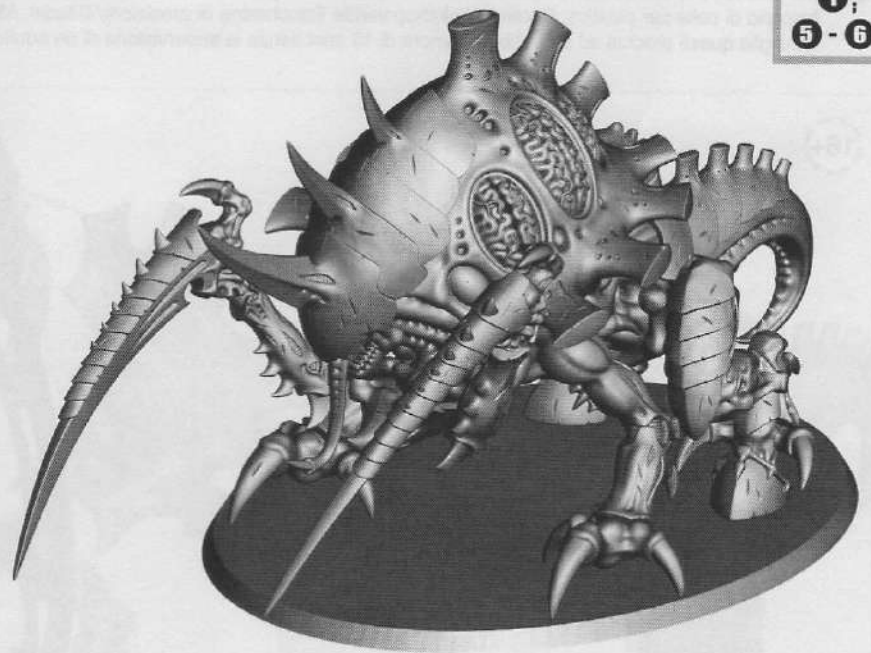
- Sostituisci il componente 10 con il componente 45 in 1C.
- Sostituisci il componente 09 con il componente 44 in 1D.
- Sostituisci il componente 21 con il componente 16 in 3A.
- Sostituisci il componente 22 con il componente 17 in 3B.
- Sostituisci i componenti 27 e 28 con i componenti 25 e 26 in 4A. Non usare il Terminator caduto.

Le fasi della guida all'assemblaggio in cui devono essere effettuate tali modifiche sono contrassegnate da *

MALECEPTOR

STEPS
ÉTAPES
PASOS
SCHRITTE
FASI

1 ;
5 - 6



EXPLANATION OF SYMBOLS • EXPLICATION DES SYMBOLES • EXPLICACIÓN DE SÍMBOLOS
ERLÄUTERUNG DER SYMBOLE • LEGENDA DEI SIMBOLI



SPECIAL INSTRUCTION - PLEASE READ
INSTRUCTIONS SPÉCIALES - LIRE ATTENTIVEMENT
INSTRUCCIÓN ESPECIAL: POR FAVOR, LÉELA
BESONDERE ANWEISUNG - BITTE LESEN
ISTRUZIONI SPECIALI - LEGGI ATTENTAMENTE



STAGE COMPLETE
ÉTAPE TERMINÉE
PASO COMPLETADO
SCHRITT ABGESCHLOSSEN
FASE COMPLETA



ALTERNATE VIEW
AUTRE ANGLE DE VUE
VISTA ALTERNATIVA
ALTERNATIVE ANSICHT
VISUALE ALTERNATIVA



PAINT BEFORE ASSEMBLY
PEINDRE AVANT ASSEMBLAGE
PINTAR ANTES DEL MONTAJE
ERST BEMALEN, DANN ZUSAMMENBAUEN
DIPINGI PRIMA DELL'ASSEMBLAGGIO



DRY FIT STAGE BEFORE GLUING
TESTER AVANT DE COLLER
COMPROBAR EL ENCAJE ANTES DE PEGAR
POSITIONIERUNG ERST OHNE KLEBSTOFF AUSPROBIEREN
PROVA A SECCO PRIMA DI INCOLLARE



CHOICE OF PARTS
CHOIX D'ÉLÉMENTS
MODELOS DE COMPONENTES
AUSWAHL AN TEILEN
SCELTA DI COMPONENTI



REPEAT PROCESS
RÉPÉTER L'ÉTAPE
REPETIR PASOS
VORGANG WIEDERHOLEN
RIPETI IL PROCESSO



DO NOT GLUE THE COMPONENTS
NE PAS COLLER LES ÉLÉMENTS
NO PEGAR LOS COMPONENTES
BITTE DIE TEILE NICHT KLEBEN
NON INCOLLARE I COMPONENTI

! READ THIS FIRST: Before assembling your model kit please read through the instructions in this booklet carefully. A pair of plastic cutters is required to remove the plastic components in this kit from their frame. We advise using a mouldline scraping tool to clean up the parts. To assemble your model you will need plastic glue. Games Workshop sells Citadel Fine Detail Cutters, Citadel Mouldline Remover and Citadel Plastic Glue, but does not recommend these products for use by children under the age of 16 without adult supervision.

! À LIRE EN PREMIER: Avant de vous lancer dans l'assemblage de ce kit, veuillez lire attentivement les instructions de ce livret. Une pince coupante est requise pour détacher chaque élément de sa grappe. Nous vous recommandons l'utilisation d'un grattoir pour ébarber les éléments. Pour l'assemblage, vous aurez également besoin de colle plastique. Games Workshop commercialise les Pinces de Précision Citadel, l'Ébarboir Citadel et la Colle Plastique Citadel, mais n'en recommande pas l'utilisation pour des enfants de moins de 16 ans sans la supervision d'un adulte.

! LEER ANTES DE MONTAR: Antes de montar el contenido de este kit, lee estas instrucciones cuidadosamente. Te harán falta unas tenazas para plástico a fin de separar las piezas de la matriz. También aconsejamos una herramienta para rebabas a fin de limpiar cada pieza. Para montar la miniatura necesitarás pegamento para plástico. Games Workshop vende Tenazas Citadel, Herramientas para rebabas Citadel y Pegamento para plástico Citadel, pero no recomienda estos productos a menores de 16 años sin la supervisión de un adulto.

! LIES DIES ZUERST: Bitte lies diese Anleitung sorgfältig, bevor du mit dem Zusammenbau deines Modells beginnst. Du benötigst einen Kunststoffseitenschneider, um die Kunststoffbauteile aus dem Gussrahmen her auszutrennen, und Kunststoffkleber, um die Miniatur zusammenzubauen. Außerdem empfehlen wir, die Bauteile vorher mit einem Gussgratentferner zu säubern. Games Workshop bietet Präzisions-Kunststoffseitenschneider von Citadel sowie Citadel-Kunststoffkleber an, empfiehlt aber, dass Kinder unter 16 Jahren diese nur unter Aufsicht eines Erwachsenen benutzen.

! LEGGI PRIMA QUESTO: prima di assemblare il tuo modello, leggi le istruzioni di questo libretto con attenzione. Sono necessarie un paio di tronchesine per plastica per staccare i componenti dai loro sprue. Consigliamo di usare un attrezzo apposito per pulire i componenti. Per assemblare il modello avrai bisogno di colla per plastica. Games Workshop vende Tronchesine di precisione Citadel, Attrezzo per ripulire Citadel e Colla per plastica Citadel, ma non consiglia questi prodotti ad un pubblico minore di 16 anni senza la supervisione di un adulto.

16+



CITADEL PLASTIC GLUE THICK
COLLE PLASTIQUE ÉPAISSE CITADEL
PEGAMENTO PARA PLÁSTICO ESPESO
CITADEL-KUNSTSTOFFKLEBER (DICKFLÜSSIG)
COLLA PER PLASTICA Densa CITADEL



CITADEL PLASTIC GLUE THIN
COLLE PLASTIQUE LIQUIDE CITADEL
PEGAMENTO PARA PLÁSTICO FLUIDO
CITADEL-KUNSTSTOFFKLEBER (DÜNNFLÜSSIG)
COLLA PER PLASTICA FLUIDA CITADEL



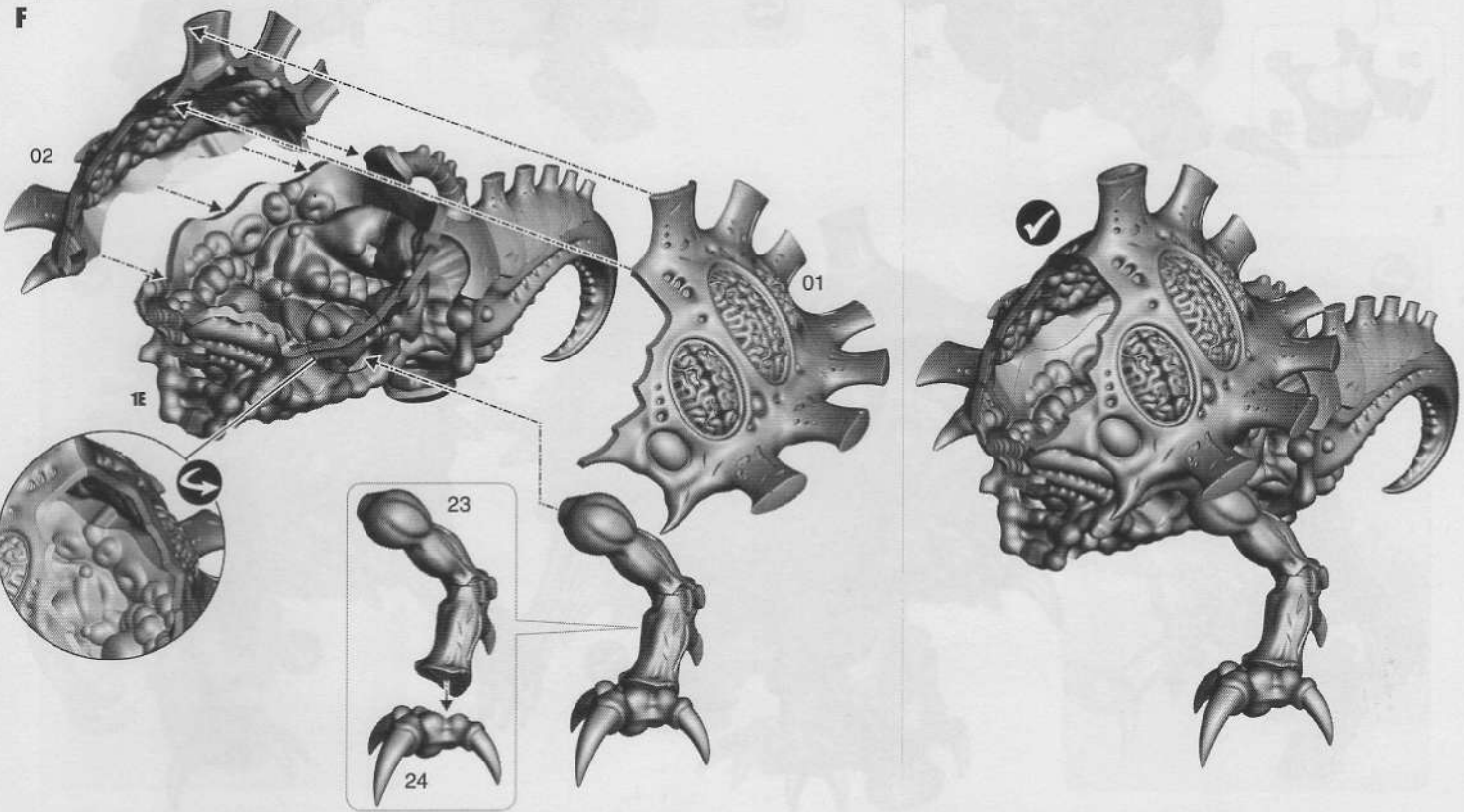
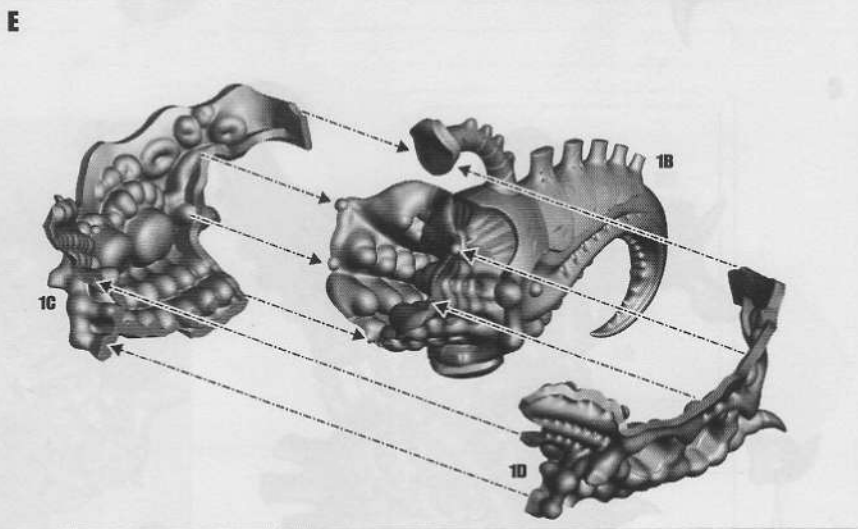
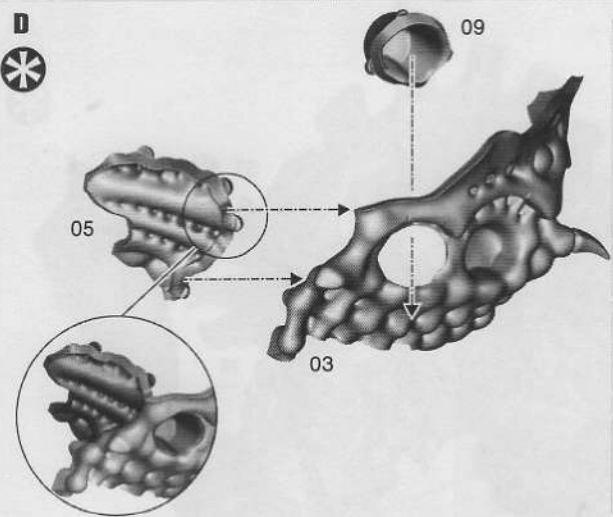
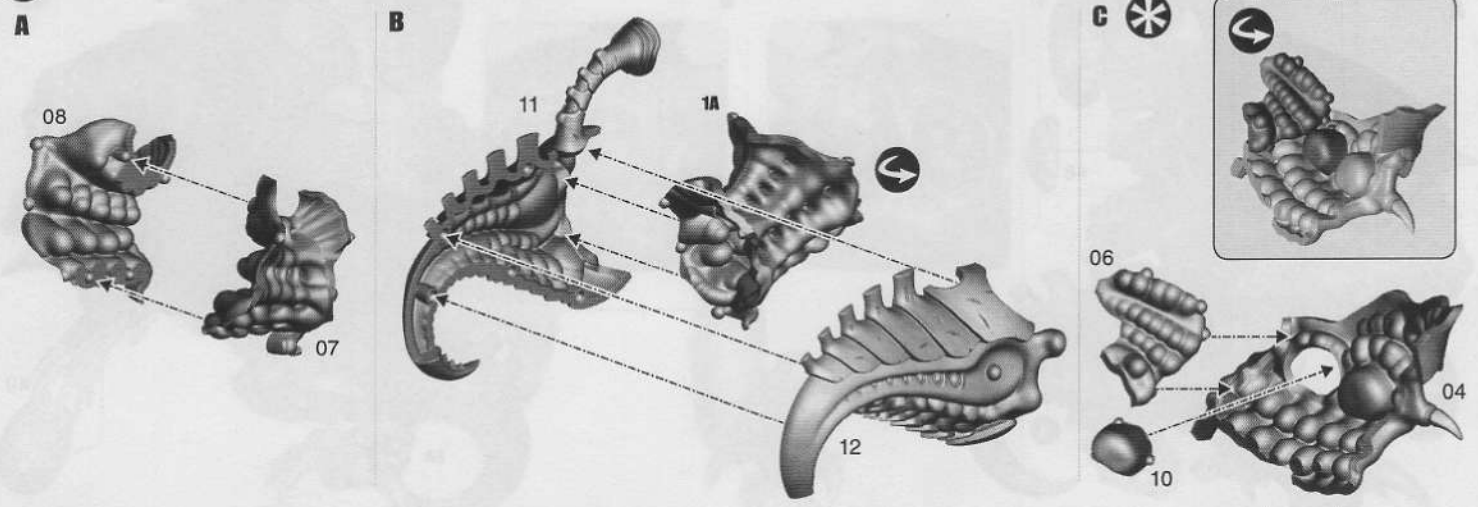
CITADEL FINE DETAIL CUTTERS
PINCES DE PRÉCISION CITADEL
TENAZAS CITADEL
PRÄZISIONS-KUNSTSTOFFSEITENSCHNEIDER
TRONCHESINE DI PRECISIONE CITADEL



CITADEL MOULDLINE REMOVER
ÉBARBOIR CITADEL
HERRAMIENTA PARA REBABAS CITADEL
GUSSGRATENTFERNER
ATTREZZO PER RIPULIRE CITADEL

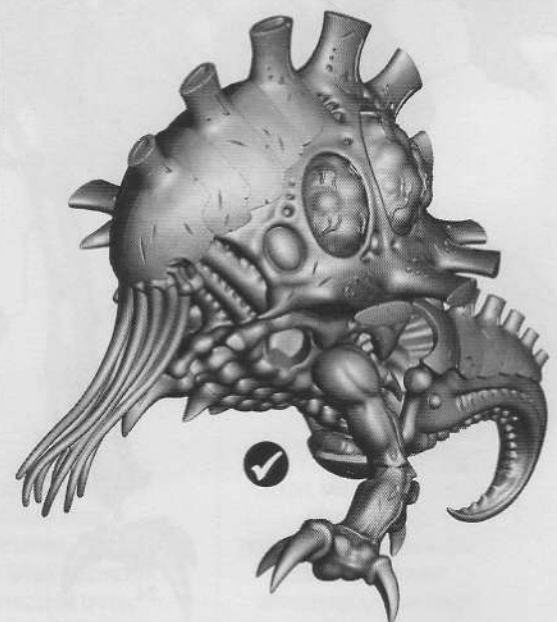
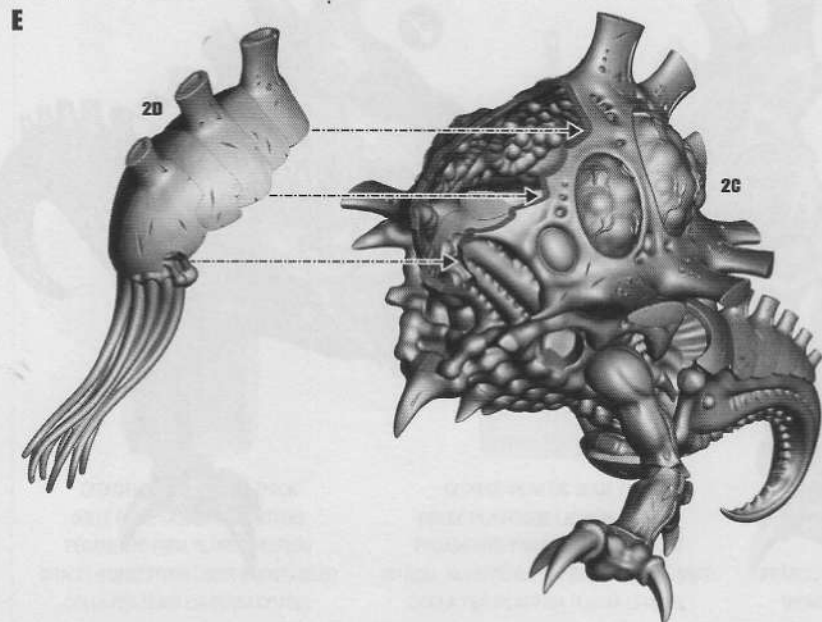
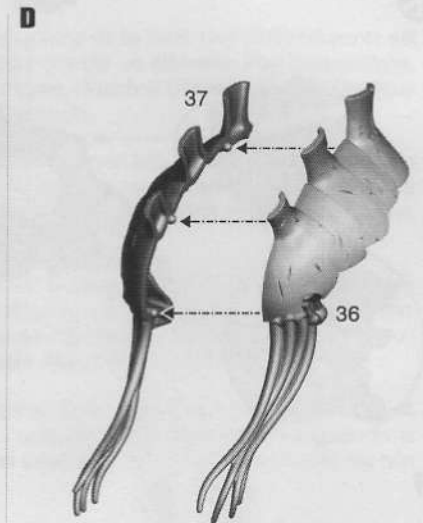
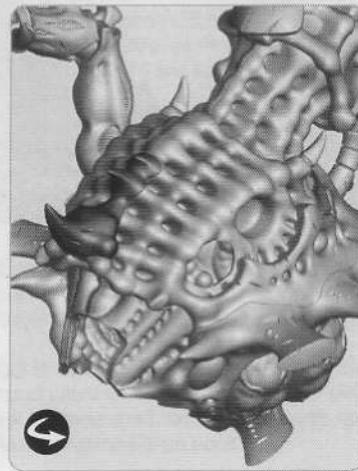
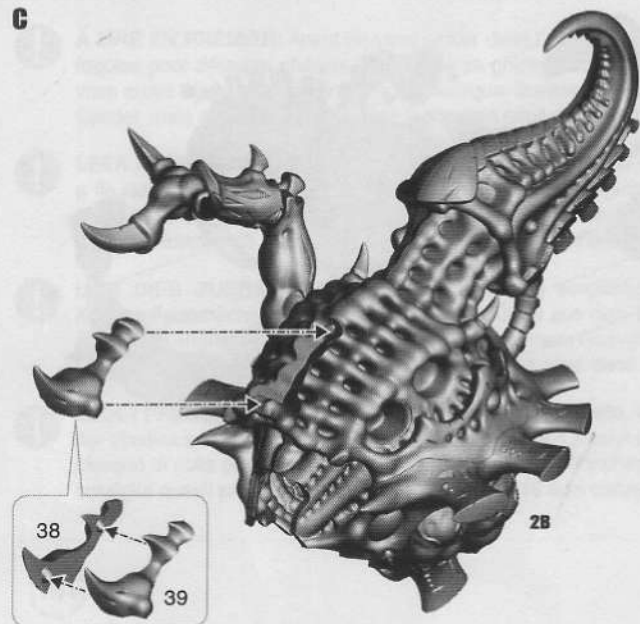
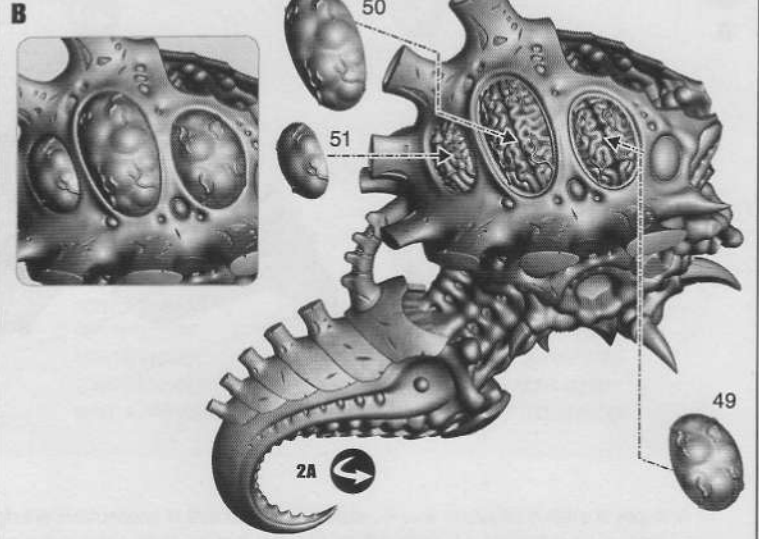
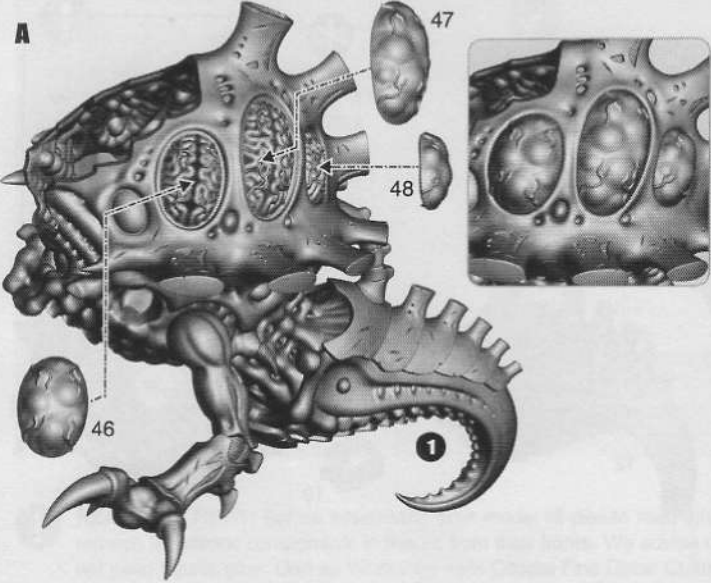
! Follow step 1 for all variants • Suivre l'étape 1 pour toutes les variantes • Sigue el paso 1 para todas las variantes
 Folge Schritt 1 für alle Varianten • Segui le fasi da 1 per tutte le varianti

1 MAIN BODY ASSEMBLY • ASSEMBLAGE DU CORPS • MONTAJE DEL CUERPO PRINCIPAL • ZUSAMMENBAU DES KÖRPERS • ASSEMBLAGGIO DEL CORPO



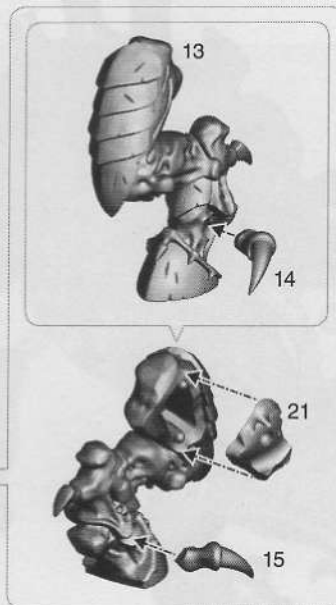
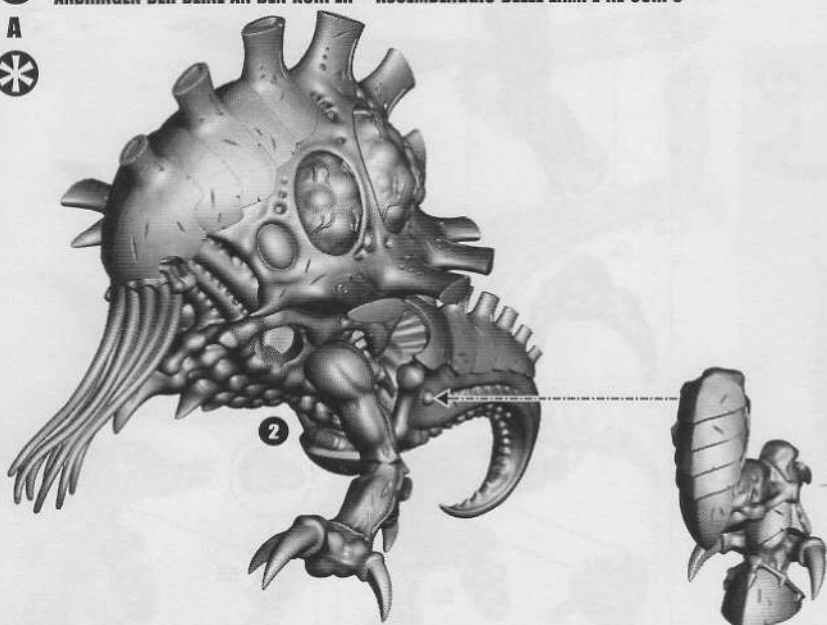
2 - 4 TOXICRENE

2 HEAD & CREST TO MAIN BODY ASSEMBLY • ASSEMBLAGE DE LA TÊTE & DE LA CRÊTE AU CORPS • MONTAJE DE LA CABEZA Y LA CRESTA AL CUERPO
ANBRINGEN VON KOPF & SCHEITELKAMM AM KÖRPER • ASSEMBLAGGIO DI TESTA E CRESTA AL CORPO

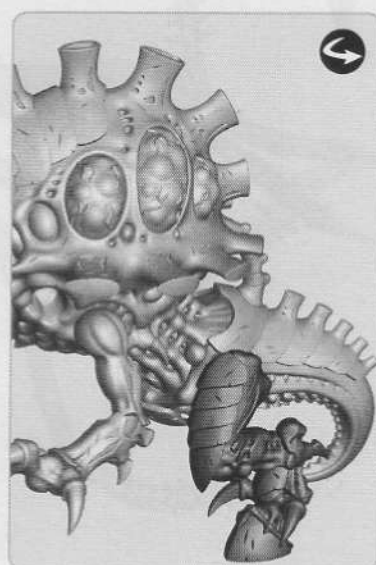
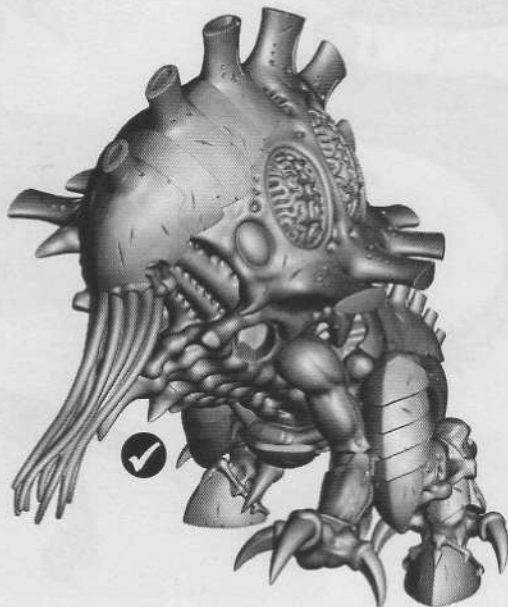
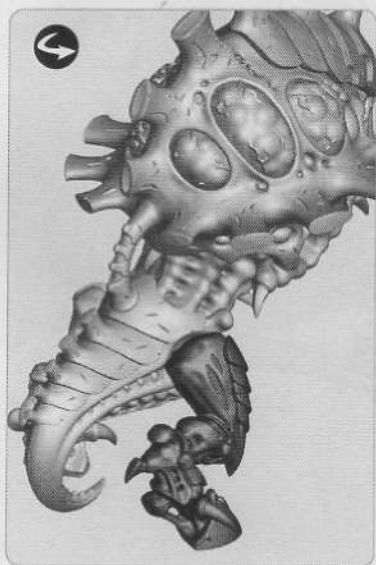
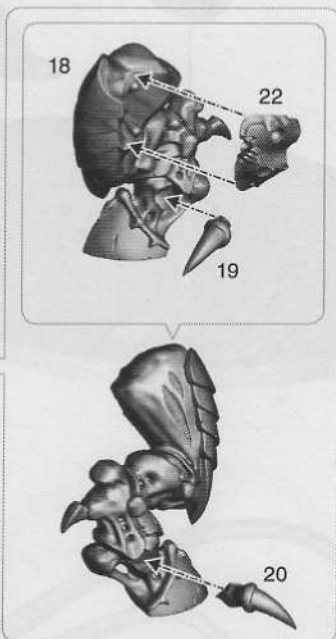
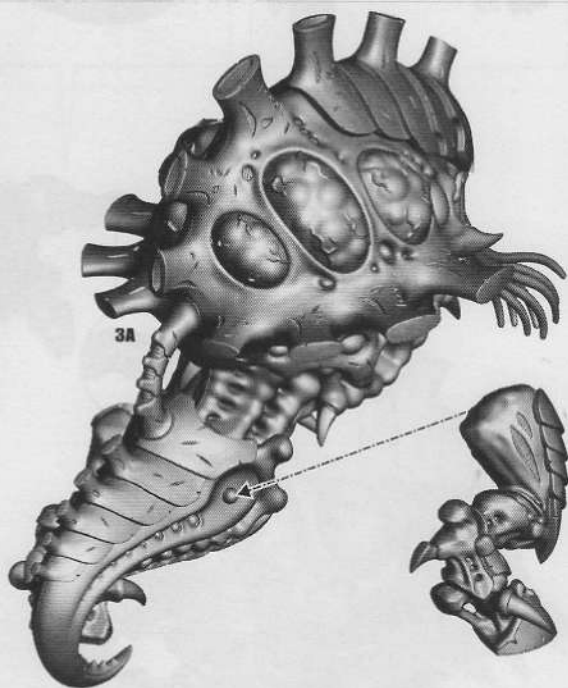


3 LEGS TO BODY ASSEMBLY • ASSEMBLAGE DES PATTES AU CORPS • MONTAJE DE LAS PATAS AL CUERPO
 ANBRINGEN DER BEINE AN DEN KÖRPER • ASSEMBLAGGIO DELLE ZAMPE AL CORPO

A

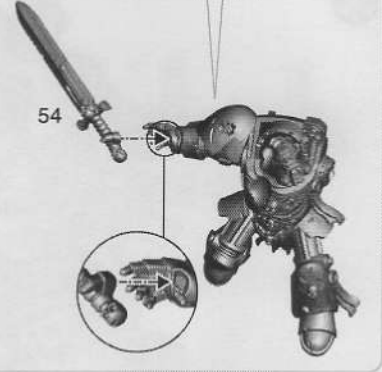
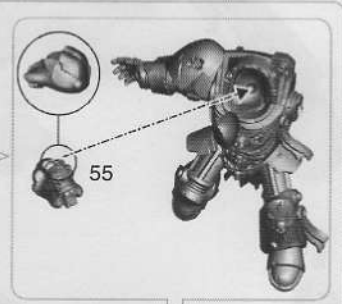
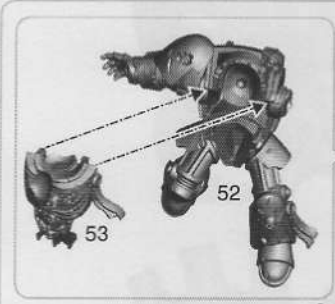


B

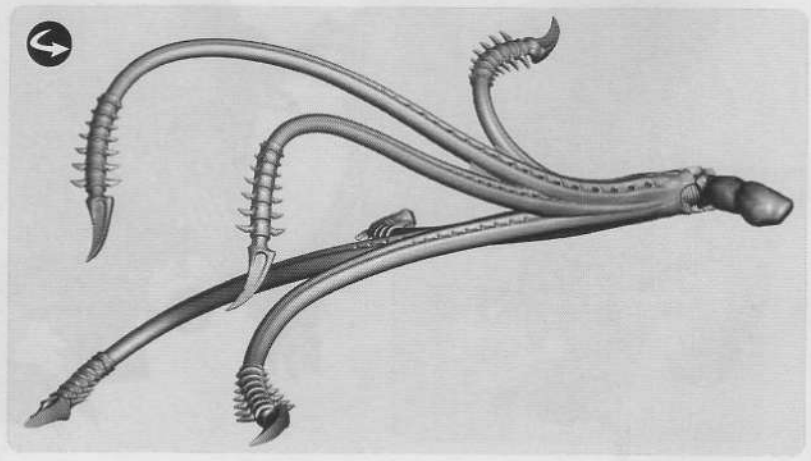
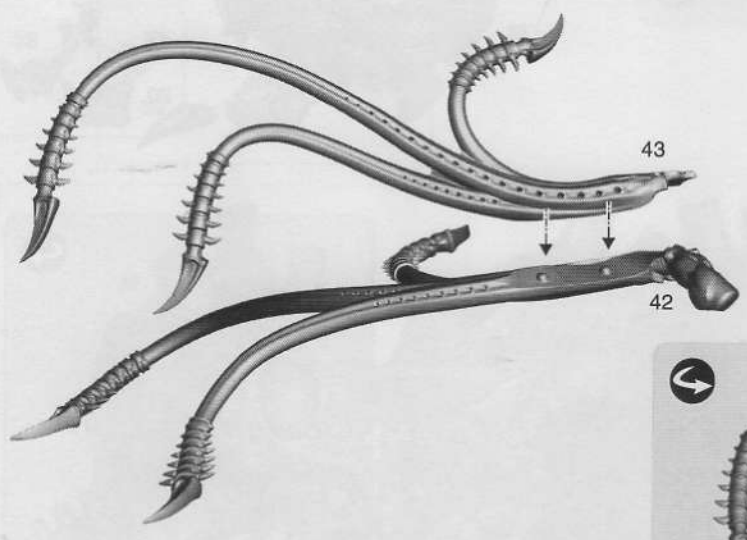


4 FINAL ASSEMBLY • ASSEMBLAGE FINAL • MONTAJE FINAL • ABSCHLIESSENDER ZUSAMMENBAU • ASSEMBLAGGIO FINALE

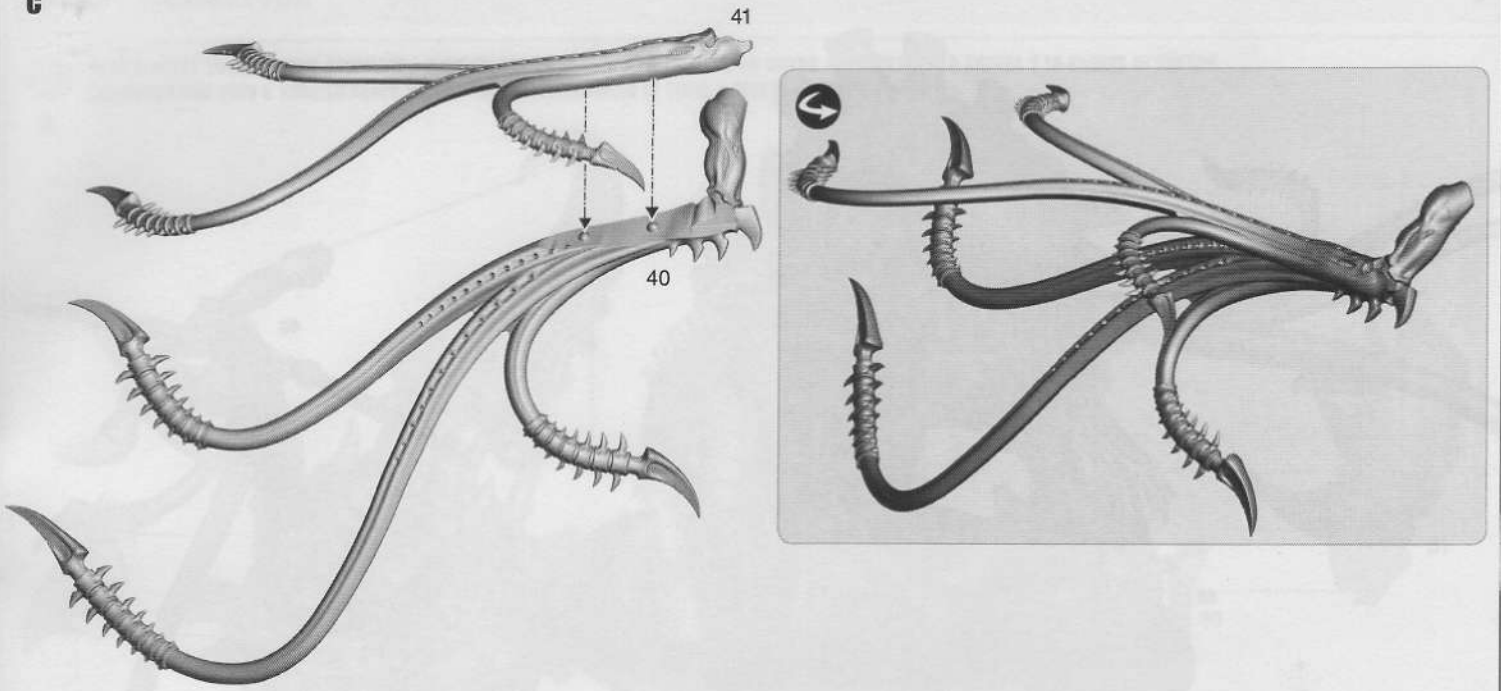
A



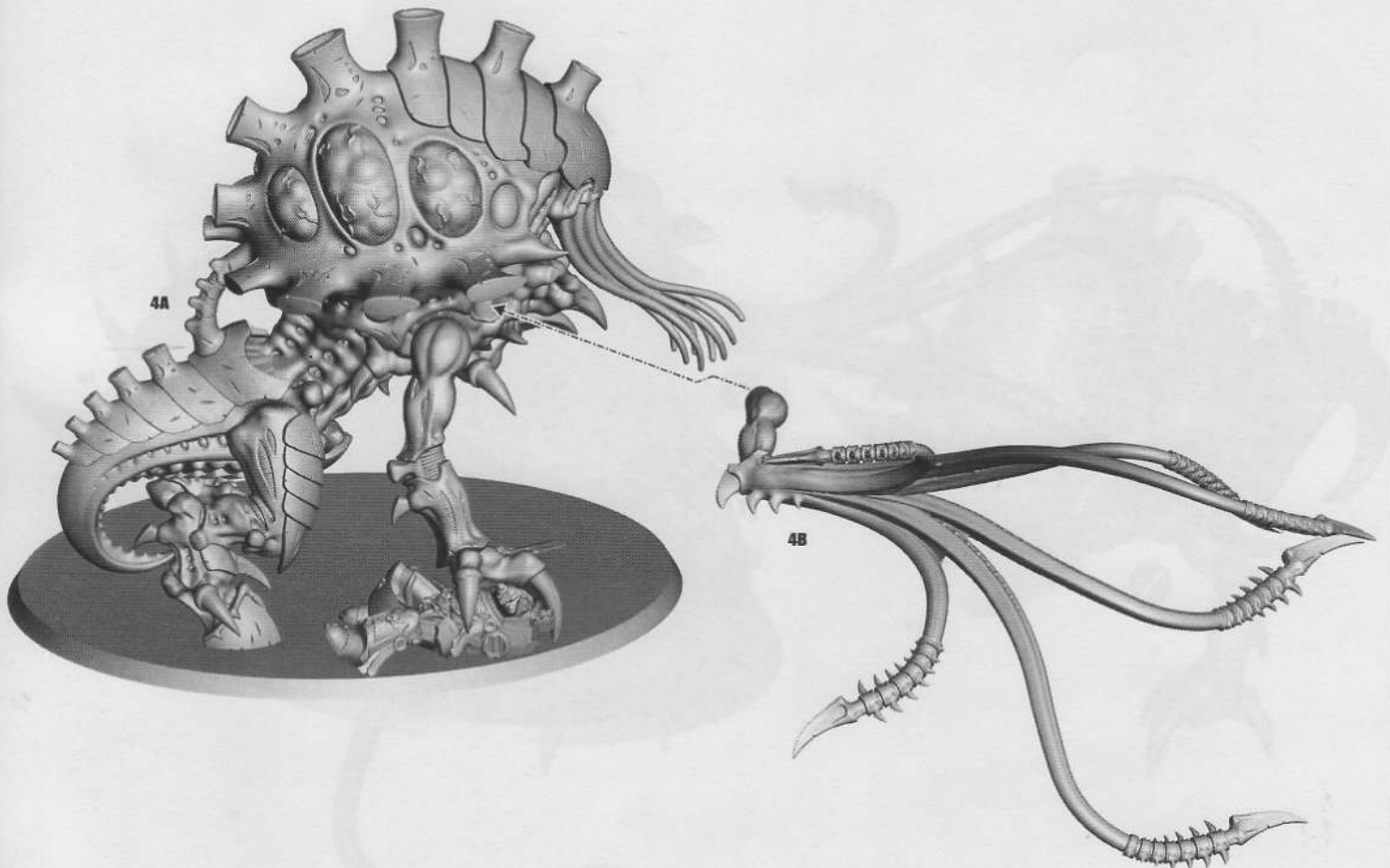
B



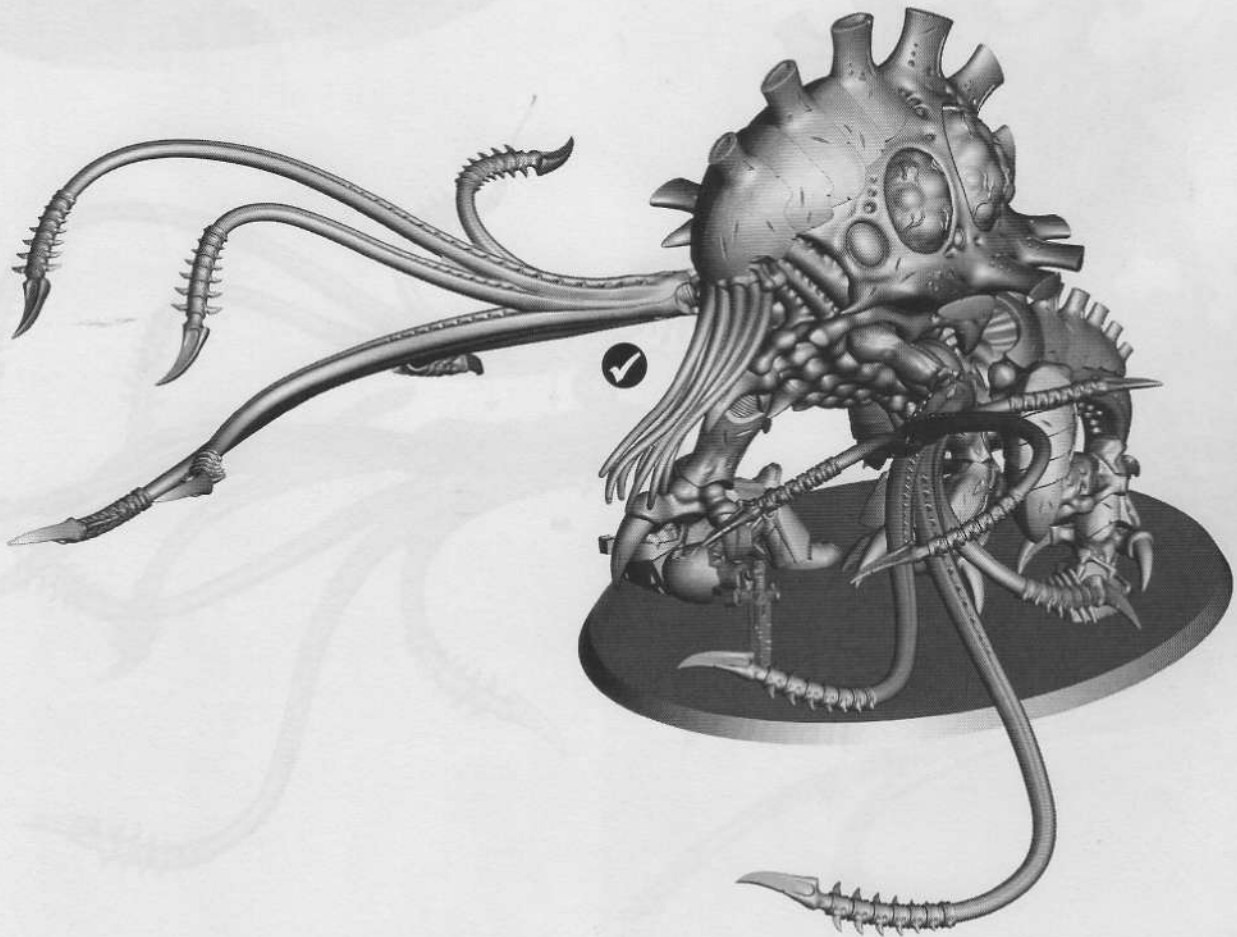
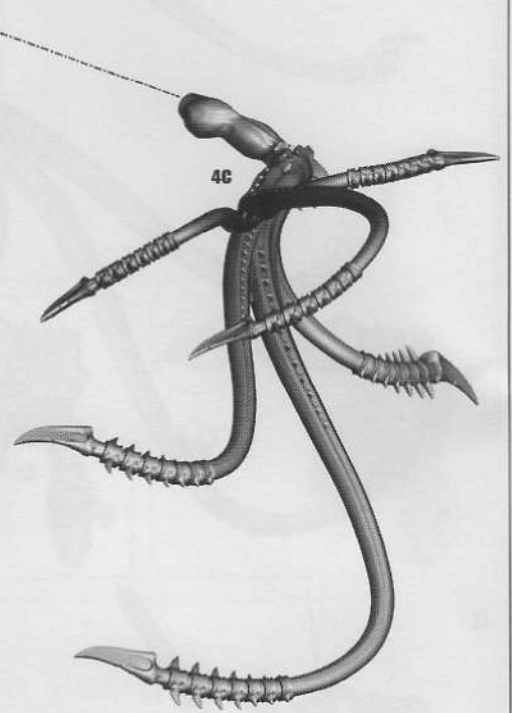
C



D



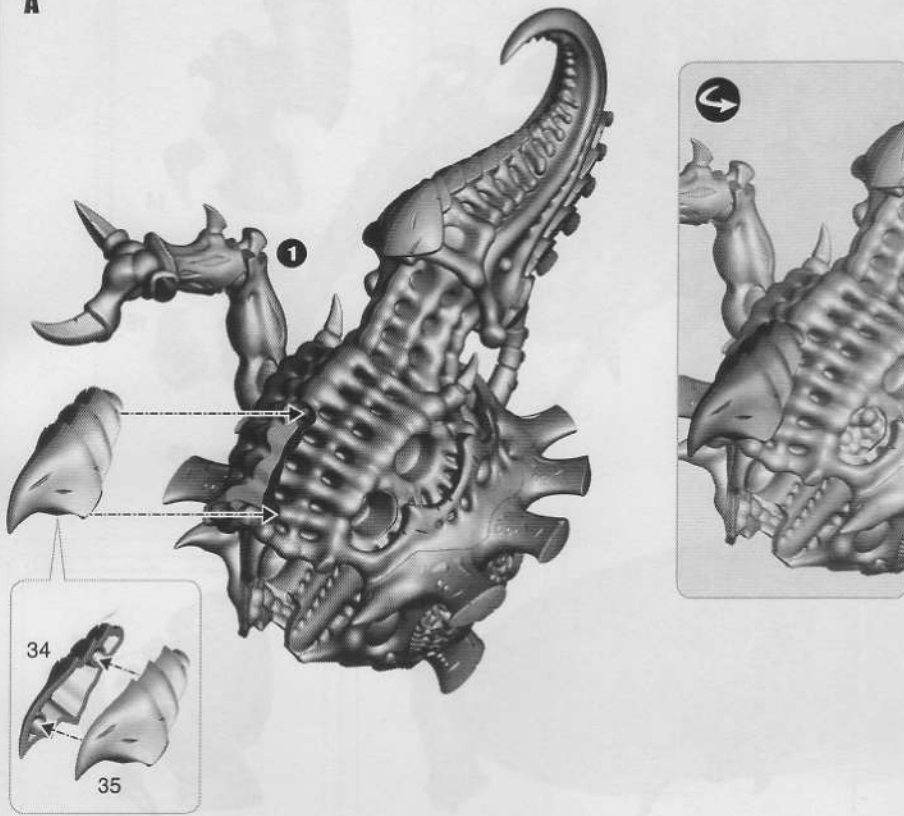
E



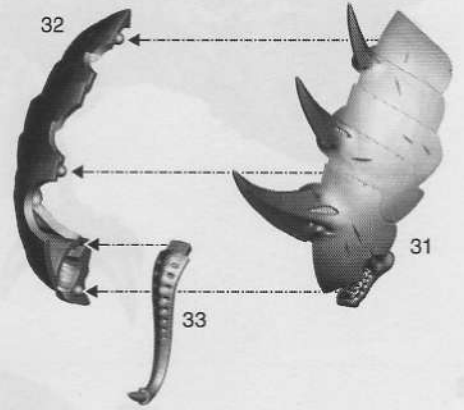
5 - 6 MALECEPTOR

5 HEAD & CREST TO MAIN BODY ASSEMBLY • ASSEMBLAGE DE LA TÊTE & DE LA CRÊTE AU CORPS • MONTAJE DE LA CABEZA Y LA CRESTA AL CUERPO
ANBRINGEN VON KOPF & SCHEITELKAMM AM KÖRPER • ASSEMBLAGGIO DI TESTA E CRESTA AL CORPO

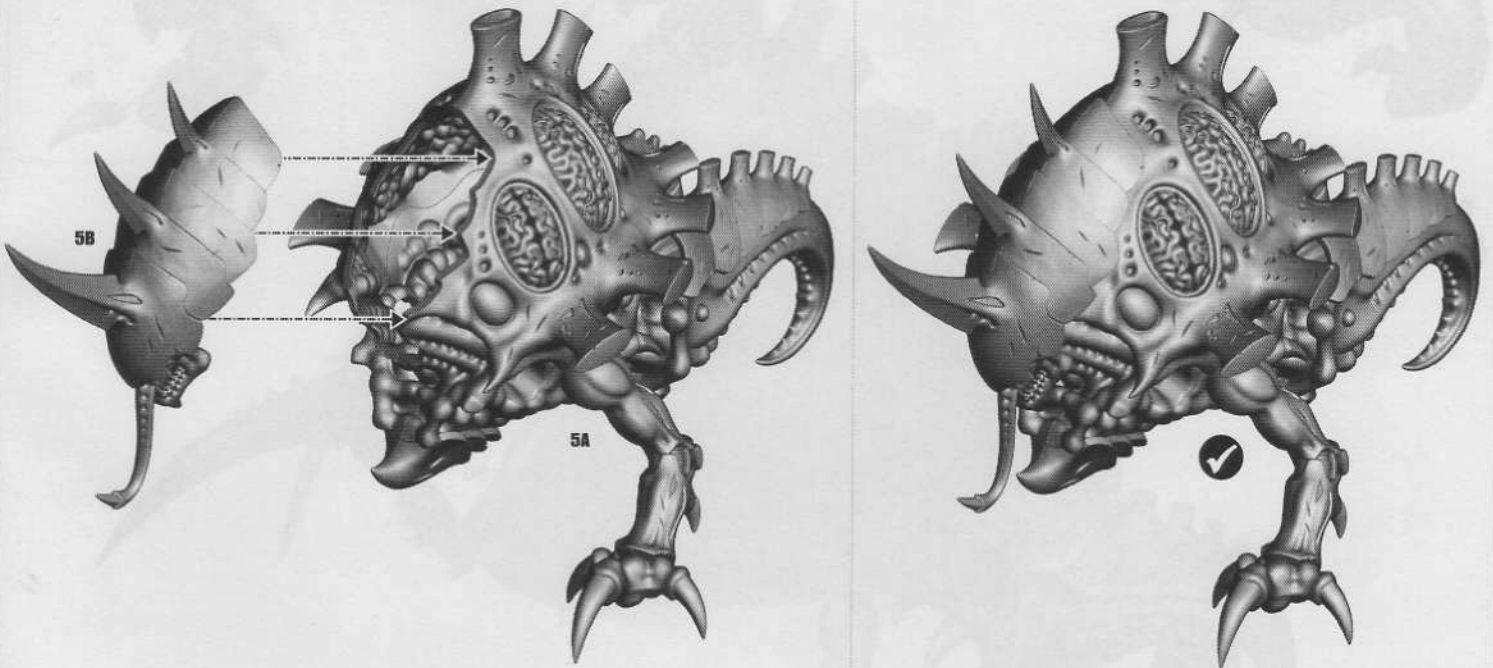
A



B



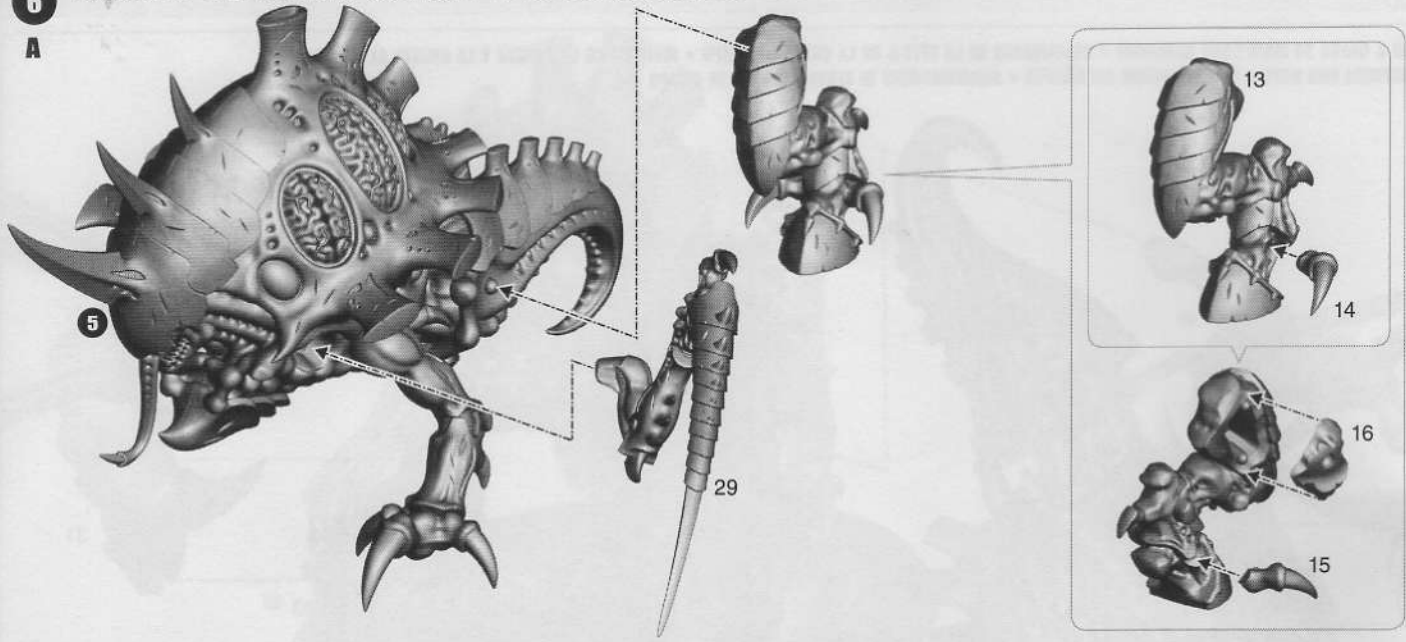
C



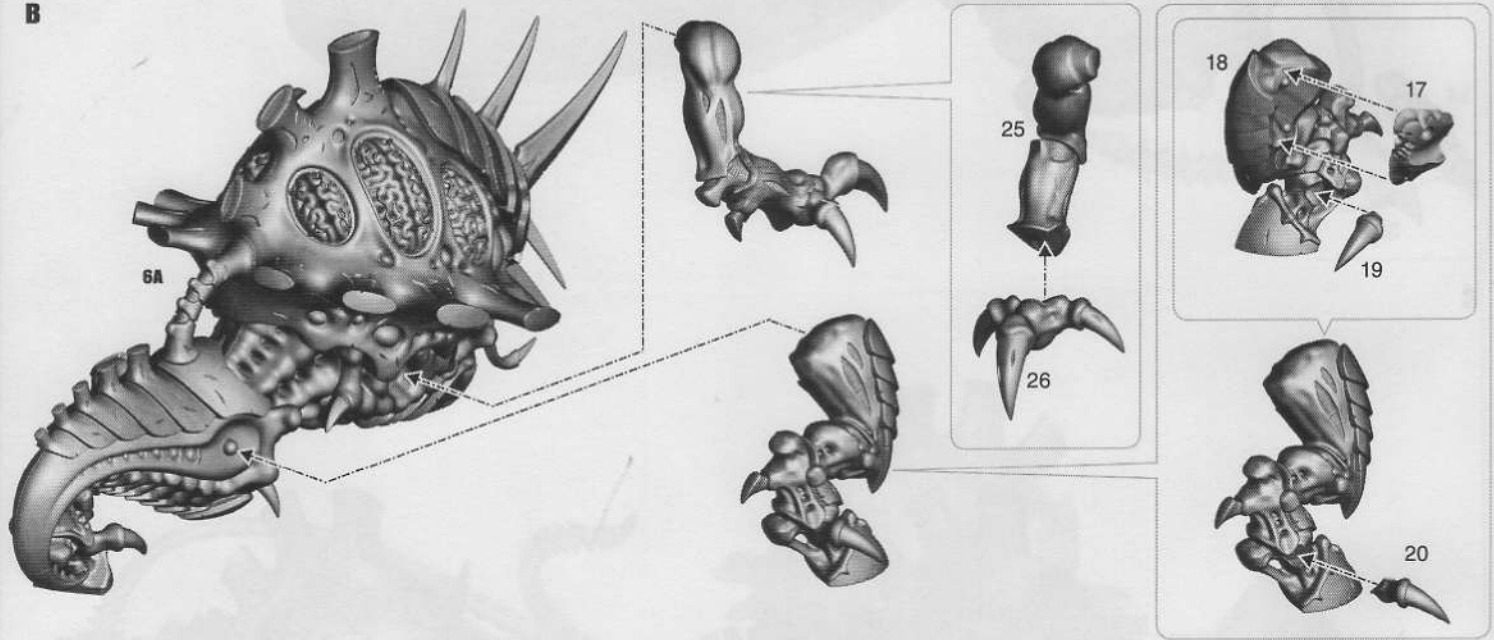
6

FINAL ASSEMBLY • ASSEMBLAGE FINAL • MONTAJE FINAL • ABSCHLIESSENDE ZUSAMMENBAU • ASSEMBLAGGIO FINALE

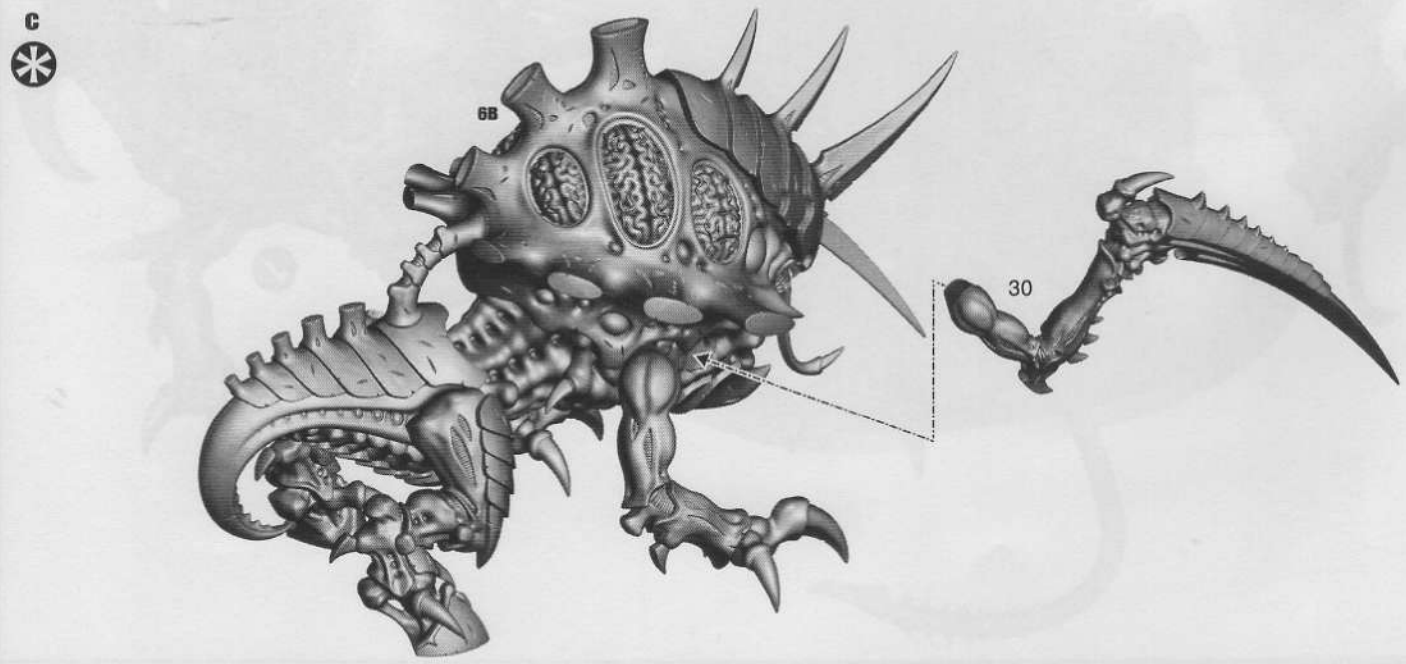
A



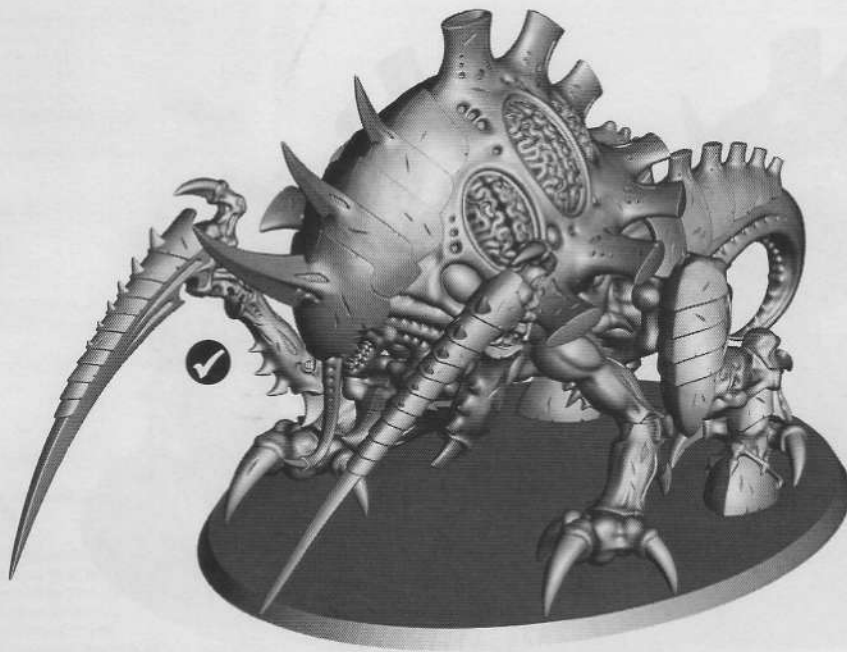
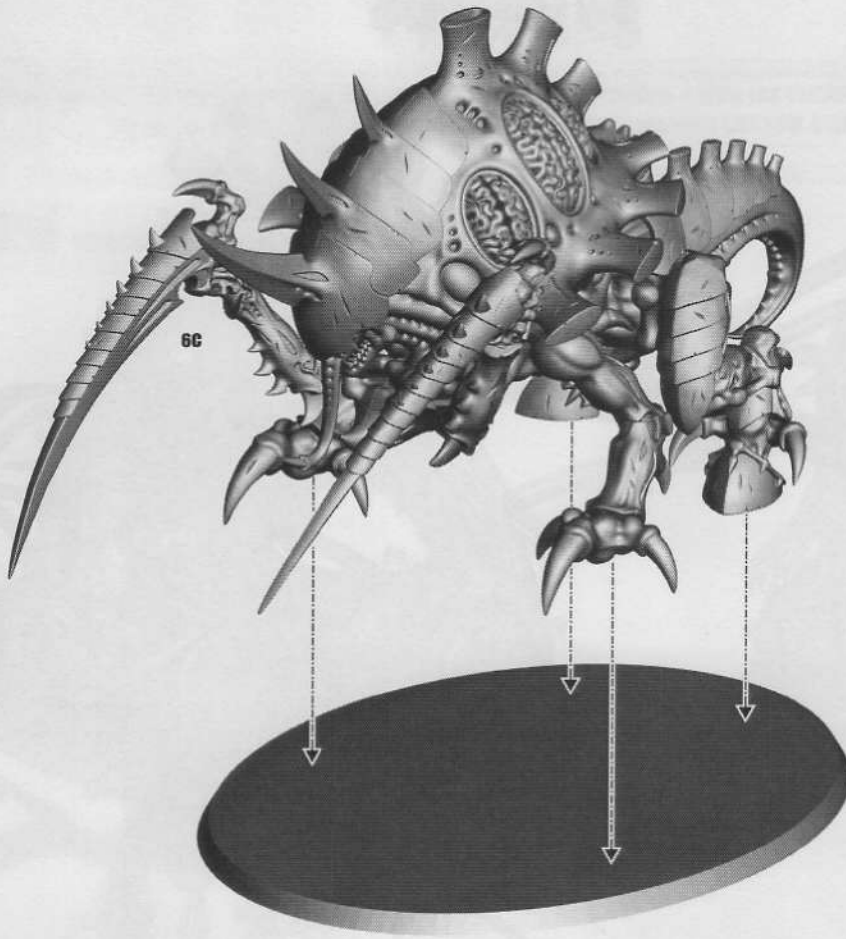
B



C

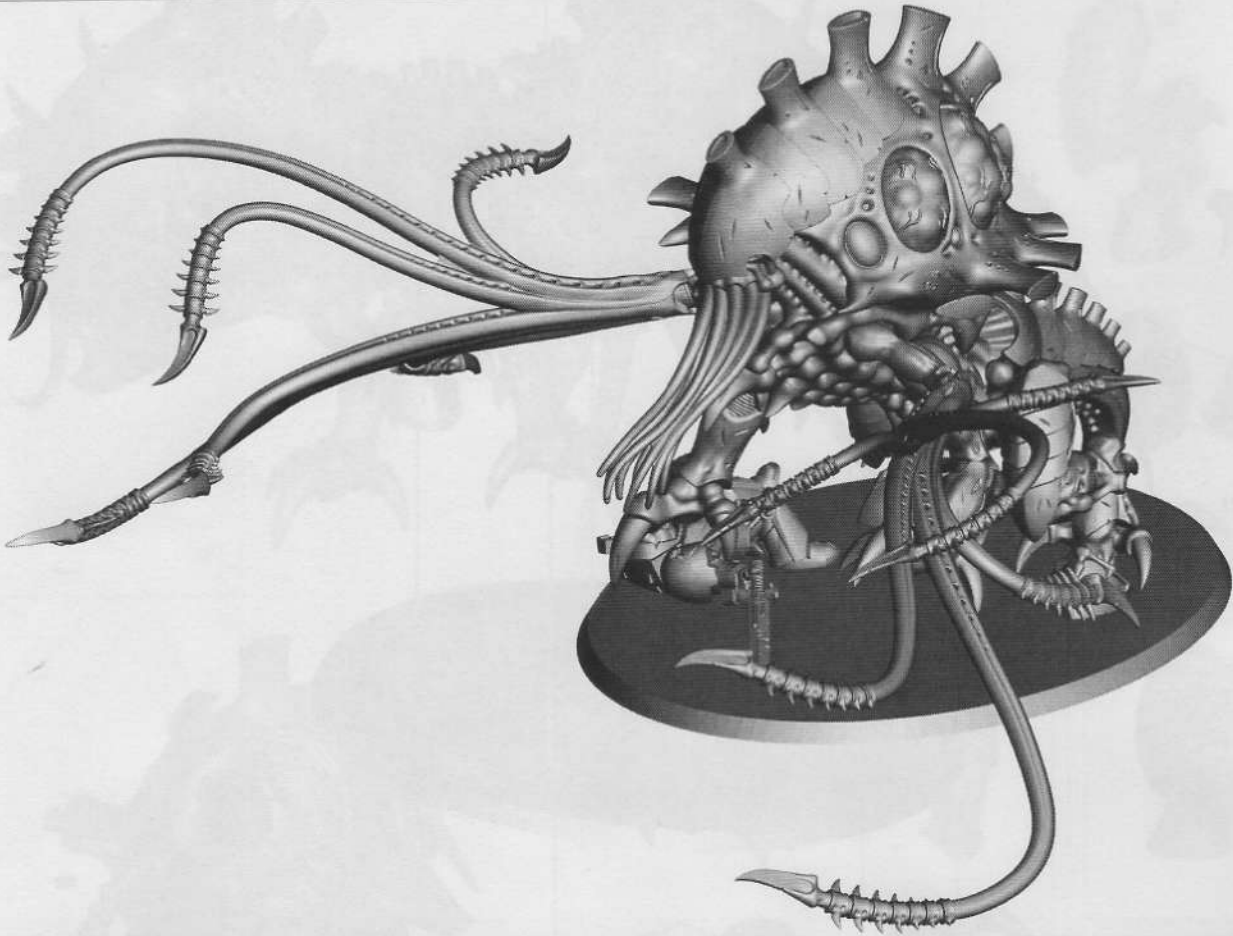


D



TYRANIDS

WARHAMMER
40,000

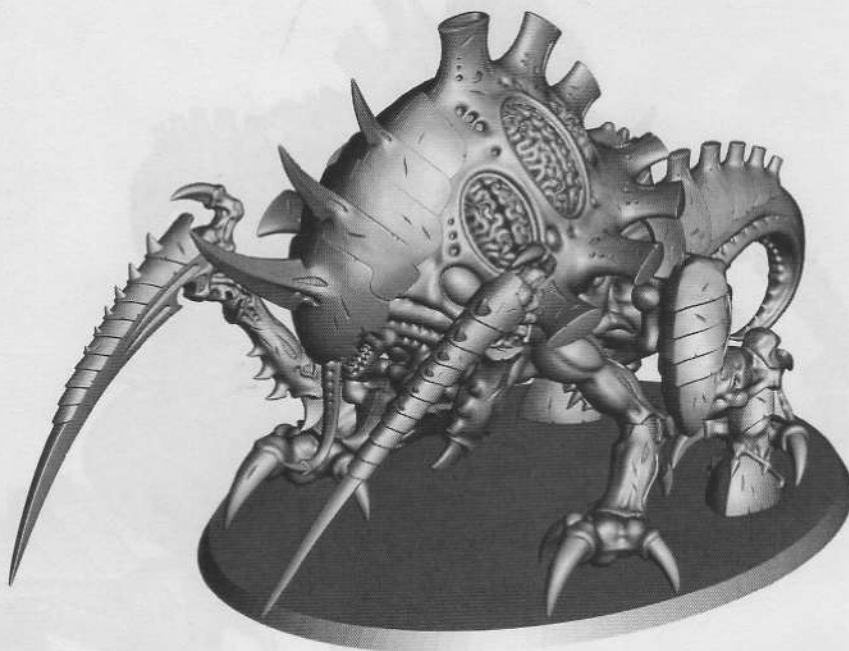


WS	BS	S	T	W	I	A	Ld	Sv
3	3	5	6	5	3	6	8	4+

Unit Type

Toxicrene

Monstrous Creature



WS	BS	S	T	W	I	A	Ld	Sv
3	3	6	6	5	3	3	10	4+

Unit Type

Maleceptor

Monstrous Creature